

# EZPAN Field-Adjustable Flat Panels



EZP2X2



PROJECT: \_\_\_\_\_

DATE: \_\_\_\_\_

TYPE: \_\_\_\_\_

PREPARED BY: \_\_\_\_\_

EZP1X4



EZP2X4



## KEY FEATURES

- Available in 3 sizes 1X4, 2X2, and 2X4 with adjustable wattages.
- CCT Selectable: 3500/4000/5000K
- Lightcloud Blue models can adjust as low as 2200K and as high as 6500K, RGB models offer 16+ million colors.
- Voltage ratings: 120-277V
- Available with battery backup
- All models are dimmable
- Suitable for damp locations
- 5-year, no-compromise warranty

RGBW color tuning with Lightcloud Blue



## PERFORMANCE

### FIELD-ADJUSTABLE

EZP2X2	3500K	4000K	5000K	3500K	4000K	5000K	3500K	4000K	5000K
WATTAGE	40W			30W			25W		
INPUT WATTS	39.9W	38.7W	40.3W	31.4W	30.5W	31.6W	26.3W	25.7W	26.5W
LUMENS	4,863	5,272	5,044	3,980	4,256	4,136	3,409	3,621	3,549
EFFICACY	121.9	136.2	125.2	126.8	139.5	130.9	129.6	140.9	133.9
CRI	82	84	83	83	84	83	83	84	83
VOLTAGE RATING	120-277V								

EZP1X4	3500K	4000K	5000K	3500K	4000K	5000K	3500K	4000K	5000K
WATTAGE	40W			30W			25W		
INPUT WATTS	40.4W	39.1W	40.5W	31W	30.2W	31W	26.3W	25.7W	26.3W
LUMENS	4,448	4,639	4,568	3,521	3,645	3,601	3,013	3,106	3,091
EFFICACY	110.1	118.7	112.8	113.6	120.7	116.2	114.6	120.9	117.5
CRI	83	84	83	84	85	83	84	85	83
VOLTAGE RATING	120-277V								

EZP2X4	3500K	4000K	5000K	3500K	4000K	5000K	3500K	4000K	5000K
WATTAGE	50W			40W			30W		
INPUT WATTS	49.6W	47.5W	49.8W	40W	38.5W	40.1W	30.4W	29.5W	30.5W
LUMENS	5,988	6,352	6,160	5,029	5,295	5,182	3,961	4,131	4,092
EFFICACY	120.7	133.7	123.7	125.7	137.5	129.2	130.3	140	134.2
CRI	83	84	83	83	84	83	83	85	83
VOLTAGE RATING	120-277V								

# EZPAN Field-Adjustable Flat Panels



## PERFORMANCE

EZPHE2X2	3500K	4000K	5000K	3500K	4000K	5000K	3500K	4000K	5000K
WATTAGE	36W			30W			25W		
INPUT WATTS	35.7W	34.7W	35.7W	29.2W	28.5W	29.3W	24.8W	24.3W	24.8W
LUMENS	4,812	5,014	4,829	4,024	4,155	4,057	3,462	3,562	3,486
EFFICACY	134.8	144.5	135.3	137.8	145.8	138.5	139.6	146.6	140.6
CRI	82	84	83	82	84	83	82	84	83
VOLTAGE RATING	120-277V								

EZPHE1X4	3500K	4000K	5000K	3500K	4000K	5000K	3500K	4000K	5000K
WATTAGE	36W			30W			25W		
INPUT WATTS	36.5W	35.4W	36.4W	29.6W	28.8W	29.5W	25.2W	24.6W	25.2W
LUMENS	4,958	5,079	5,071	4,077	4,153	4,162	3,488	3,541	3,572
EFFICACY	135.8	143.5	139.3	137.7	144.2	141.1	138.4	143.9	141.7
CRI	84	85	84	84	85	84	84	85	84
VOLTAGE RATING	120-277V								

EZPHE2X4	3500K	4000K	5000K	3500K	4000K	5000K	3500K	4000K	5000K
WATTAGE	50W			40W			30W		
INPUT WATTS	48.4W	46.4W	48.4W	39.2W	37.8W	39.1W	30.3W	29.4W	30.2W
LUMENS	6,753	6,967	6,786	5,655	5,782	5,678	4,486	4,576	4,515
EFFICACY	139.5	150.2	140.2	144.3	153	145.2	148.1	155.6	149.5
CRI	82	84	83	82	84	83	82	84	83
VOLTAGE RATING	120-277V								

## LIGHTCLOUD BLUE - TUNABLE WHITE

EZP2X2 (W/LCBS & LCBS/MVS)	2700K	3000K	3500K	4000K	5000K	6500K
WATTAGE	40W					
INPUT WATTS	39.9W	39.8W	40.5W	40.7W	41.2W	41.6W
LUMENS	4,556	4,639	4,725	4,774	4,855	4,929
EFFICACY	114.2	116.6	116.7	117.3	117.8	118.5
CRI	81	83	85	86	85	82
VOLTAGE RATING	120-277V					

EZP1X4 (W/LCBS & LCBS/MVS)	2700K	3000K	3500K	4000K	5000K	6500K
WATTAGE	40W					
INPUT WATTS	40.1W	40.1W	40.2W	40.2W	40.3W	40.2W
LUMENS	4,625	4,673	4,697	4,736	4,771	4,809
EFFICACY	115.3	116.5	116.8	117.8	118.4	119.6
CRI	81	83	85	86	85	82
VOLTAGE RATING	120-277V					

EZP2X4 (W/LCBS & LCBS/MVS)	2700K	3000K	3500K	4000K	5000K	6500K
WATTAGE	50W					
INPUT WATTS	49.6W	49.5W	49.8W	49.8W	50.0W	50.2W
LUMENS	6,075	6,091	6,171	6,220	6,258	6,322
EFFICACY	122.5	123.1	123.9	124.9	125.2	125.9
CRI	81	84	85	86	85	82
VOLTAGE RATING	120-277V					

## PERFORMANCE

### LIGHTCLOUD BLUE - RGBW

EZP2X2/RGB	2200K	2700K	3000K	3500K	4000K	RED	GREEN	BLUE
INPUT WATTS	13.4	15.7	17.9	26.8	42.3	10.6	10.8	10.9
LUMENS	462	746	1,016	2,127	4,758	189	372	83
EFFICACY	34.5	47.5	56.7	79.4	112.5	17.9	34.4	7.6
VOLTAGE RATINGS	120-277V							

EZP1X4/RGB	2200K	2700K	3000K	3500K	4000K	RED	GREEN	BLUE
INPUT WATTS	13.4	16	19.0	29.5	42.6	10.3	10.4	10.5
LUMENS	560	875	1,226	2,480	4,646	213	454	91
EFFICACY	41.8	54.7	64.5	84.1	109.1	20.7	43.7	8.7
VOLTAGE RATINGS	120-277V							

EZP2X4/RGB	2200K	2700K	3000K	3500K	4000K	RED	GREEN	BLUE
INPUT WATTS	20.6	23.6	26.6	36.6	48	16	15.7	15.1
LUMENS	809	1,181	1,571	2,891	5,722	325	636	132
EFFICACY	39.3	50.0	59.0	79.0	119.2	20.3	40.5	8.7
VOLTAGE RATINGS	120-277V							

## TECHNICAL SPECIFICATIONS

### COMPLIANCE

#### UL Listed

UL Listed, UL Classified, UL Recognized

#### Environment

Suitable for use indoors in dry and damp environments.

#### IESNA LM-79 & LM-80 Testing

RAB LED luminaires and LED components have been tested by an independent laboratory in accordance with IESNA LM-79 and LM-80

#### DLC Listed

This product is listed by Design Lights Consortium (DLC) as an ultra-efficient premium product that qualifies for the highest tier of rebates from DLC Member Utilities. Designed to meet DLC 5.1 requirements

DLC ID:

MODEL#	DLC ID
EZPHE2X2	S-8VMHXZ
EZPHE1X4	S-613T6F
EZPHE2X4	S-2BZ1QL

This product is on the Design Lights Consortium (DLC) Qualified Products List and is eligible for rebates from DLC Member Utilities. Designed to meet DLC 5.1 requirements.

DLC ID:

MODEL#	DLC ID
EZP2X2	S-70LNZS
EZP1X4*	S-CN5JZS
EZP2X4	S-4LR47P

\*EZP1X4 models meet DLC 6.0 requirements

Lightcloud Blue RGB models are not DLC Listed.

#### California Energy Commission (CEC) Status

Lawful for Sales in California

### COMPLIANCE

#### FCC Compliance

Complies with Part 15 of the FCC Rules

#### RoHS

Mercury and UV free. RoHS-compliant components.

### CONSTRUCTION

#### Cold Weather Starting Temperature

Minimum starting temperature is -30°C (-22°F)

#### Cold Weather Starting Temperature w/Battery Backup

Minimum starting temperature is 0°C (32°F)

#### Maximum Ambient Temperature

Suitable for use in up to 40°C (104°F)

#### Maximum Ambient Temperature w/Battery Backup

Suitable for use in up to 40°C (104°F)

#### Mounting

Surface, suspended & recessed mounting. The mounting accessories sold separately.

#### Lens

Frosted Polystyrene (PS)

#### Housing

Metal + Plastic

#### Reflector

TPET reflective paper

#### Installation

Standard integral T-bar clips secure the fixture to T-bars and prevent T-system separation

#### Finish

Formulated for high durability and long-lasting color

#### Green Technology

Mercury and UV free. RoHS-compliant components.

## TECHNICAL SPECIFICATIONS

### LED CHARACTERISTICS

#### LEDs

Long-life, high-efficacy, discrete, surface-mount LEDs

#### Color Stability

LED color temperature is warrantied to shift no more than 200K in color temperature over a 5-year period

#### Color Consistency (RGB Models)

7-step MacAdam Ellipse binning to achieve consistent fixture-to-fixture color

#### Color Uniformity:

RAB's range of CCT (Correlated Color Temperature) follows the guidelines of the American National Standard for Specification for the Chromaticity of Solid State Lighting (SSL) Products, ANSI C78.377-2017

### FACTORY SETTINGS

#### Selectable Wattages:

EZP2X2: 40/30/25W (40W default)

EZP1X4: 40/30/25W (40W default)

EZP2X4: 50/40/30W (50W default)

EZPHE2X2: 36/30/25W (36W default)

EZPHE1X4: 36/30/25W (36W default)

EZPHE2X4: 50/40/30W (50W default)

#### Color Temperature:

3500/4000/5000K (4000K default) mobile app or other devices.

Lightcloud Blue models offer wireless dimming and color tuning via the mobile app or other devices.

### ELECTRICAL

#### Drivers :

Class 2, Constant Current, 120-277V, 50/60Hz

EZP2X2 / EZP1X4:

36W: 120V: 0.33A, 208V: 0.19A, 240V: 0.17A, 277V: 0.14A

30W: 120V: 0.25A, 208V: 0.14A, 240V: 0.13A, 277V: 0.11A

25W: 120V: 0.21A, 208V: 0.12A, 240V: 0.10A, 277V: 0.09A

EZP2X4:

50W: 120V: 0.42A, 208V: 0.24A, 240V: 0.21A, 277V: 0.18A

40W: 120V: 0.33A, 208V: 0.19A, 240V: 0.17A, 277V: 0.14A

30W: 120V: 0.25A, 208V: 0.14A, 240V: 0.13A, 277V: 0.11A

EZPHE2X2 / EZPHE1X4:

36W: 120V: 0.30A, 208V: 0.17A, 240V: 0.15A, 277V: 0.13A

30W: 120V: 0.25A, 208V: 0.14A, 240V: 0.13A, 277V: 0.11A

25W: 120V: 0.21A, 208V: 0.12A, 240V: 0.10A, 277V: 0.09A

EZPHE2X4:

50W: 120V: 0.42A, 208V: 0.24A, 240V: 0.21A, 277V: 0.18A

40W: 120V: 0.33A, 208V: 0.19A, 240V: 0.17A, 277V: 0.14A

30W: 120V: 0.25A, 208V: 0.14A, 240V: 0.13A, 277V: 0.11A

#### Drivers : RGB Models

Class 2, Constant Current, 120-277V, 60Hz

EZP2X2/RGB: 120V: 0.36A, 208V: 0.21A, 240V: 0.18A, 277V: 0.16A

EZP1X4/RGB: 120V: 0.35A, 208V: 0.20A, 240V: 0.18A, 277V: 0.15A

EZP2X4/RGB: 120V: 0.44A, 208V: 0.25A, 240V: 0.22A, 277V: 0.19A

#### THD: (Default)

EZP2X2: 12.2% at 120V, 15.1% at 277V

EZP1X4: 11.7% at 120V, 15.1% at 277V

EZP2X4: 10.9% at 120V, 12.3% at 277V

EZPHE2X2: 11.1% at 120V, 9.6% at 277V

EZPHE1X4: 11.6% at 120V, 10.4% at 277V

EZPHE2X4: 10.9% at 120V, 12.7% at 277V

### ELECTRICAL (CONTINUED)

#### Power Factor: (Default)

EZP2X2: 99.3% at 120V, 97.4% at 277V

EZP1X4: 99.3% at 120V, 97.4% at 277V

EZP2X4: 99.3% at 120V, 96.9% at 277V

EZP2X2: 99.3% at 120V, 96.3% at 277V

EZP1X4: 99.2% at 120V, 96.4% at 277V

EZP2X4: 99.4% at 120V, 97.1% at 277V

#### Dimming Driver:

Driver includes dimming control wiring for 0-10V dimming systems. Requires separate 0-10V DC dimming circuit. Dims down to 10%.

*Note: Lightcloud Blue models do not require a 0-10V dimming circuit.*

#### Battery Backup:

Battery backup will operate the LED Lamp for 90 minutes if power falls. Wired for 120-277V.

*Note: Tunable white and RGB models should not be used the an emergency shunt.*

*Contact RAB customer support for alternative options.*

#### Light Loss Factor (LLF):

MODEL#	CCT	WATTS	LUMEN	BATTERY BACKUP LUMENS	LLF
EZP2X2/E	4000K	25	2989	1596	53.40%
		35	3462		46.10%
		40	4400		36.27%
EZP1X4/E	4000K	25	3069	1579	51.45%
		35	3588		44.01%
		40	4656		33.91%
EZP2X4/E	4000K	30	3572	1565	43.81%
		40	4591		34.09%
		50	5576		28.07%
EZP2X2HE/E	4000K	25	2990	1606	53.71%
		30	3454		46.50%
		36	4402		36.48%
EZP1X4HE/E	4000K	25	3392	1741	51.33%
		30	3986		43.68%
		36	4816		36.15%
EZP2X4HE/E	4000K	30	4131	1814	43.91%
		40	5249		34.56%
		50	6296		28.81%

#### Surge Protection:

2 kV + 4 kV

### OTHER

#### Warranty

RAB warrants that our LED products will be free from defects in materials and workmanship for a period of five (5) years from the date of delivery to the end user, including coverage of light output, color stability, driver performance and fixture finish. RAB's warranty is subject to all terms and conditions found at [rablighting.com/warranty](http://rablighting.com/warranty).

#### Lifespan

100,000-hour LED lifespan based on IES LM-80 results and TM-21 calculations

## WIRELESS NETWORK LIGHTING CONTROLS

Lightcloud products offer integrated network lighting control for a truly wireless solution that allows you to manage RAB's various compatible devices. With RAB's patented Rapid Provisioning technology, devices can be quickly and easily commissioned for residential and commercial applications. Each device can communicate with other devices in the mesh network. With two Lightcloud systems to choose from, it's easy to implement controls anywhere.

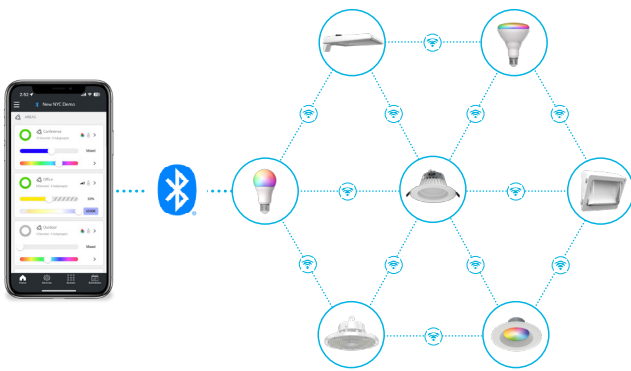


Learn more about Lightcloud wireless networked lighting controls.

### Design Lights Consortium Network Lighting Controls:

- Interior Applications: N1XMLOEATB
- Exterior Applications: NHCZ2BIA17L

## Lightcloud®



- Utilizes Bluetooth Mesh, eliminating the need for a Gateway or Hub
- Ideal for applications that need basic wireless control such as ON/OFF, dimming, color tuning, Schedules, and SmartShift
- Download the Lightcloud Blue mobile app for iOS or Android devices
- Add the XDIM/BRIDGE/LCB and LCGATEWAY to adopt premium Lightcloud Enterprise features

### SIMPLE SETUP

- 1** Download the app.
- 2** Connect product to power.
- 3** Pair product to app.
- 4** Enjoy!

Learn more about [Lightcloud Blue](#). Visit the [Lightcloud Blue Resources](#) page for more information on how to use the system.

## Lightcloud®



- Utilizes a secure cellular and Zigbee mesh network that requires a Gateway or Hub (sold separately)
- Offers premium features like remote commissioning, demand response, BACnet integration, and more
- Download the Lightcloud Enterprise mobile app for iOS or Android devices

### SIMPLE SETUP

- 1** Download the app.
- 2** Complete the startup document.
- 3** Connect product to power.
- 4** Contact RAB for Remote Commissioning.
- 5** Enjoy!

Learn more about [Lightcloud Enterprise](#). Visit the [Lightcloud Enterprise Resources](#) page for more information on how to use the system.

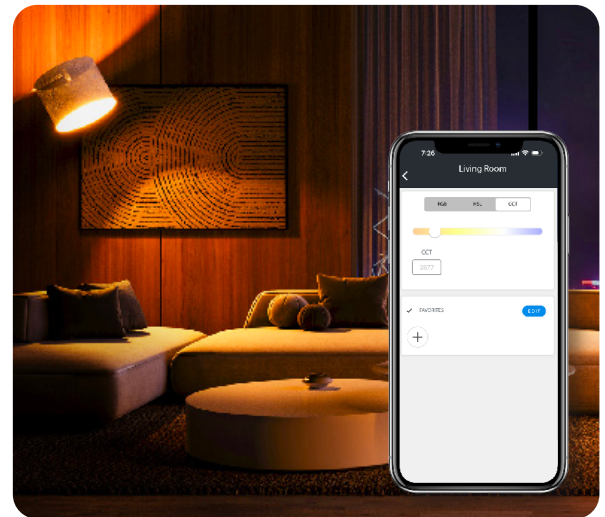
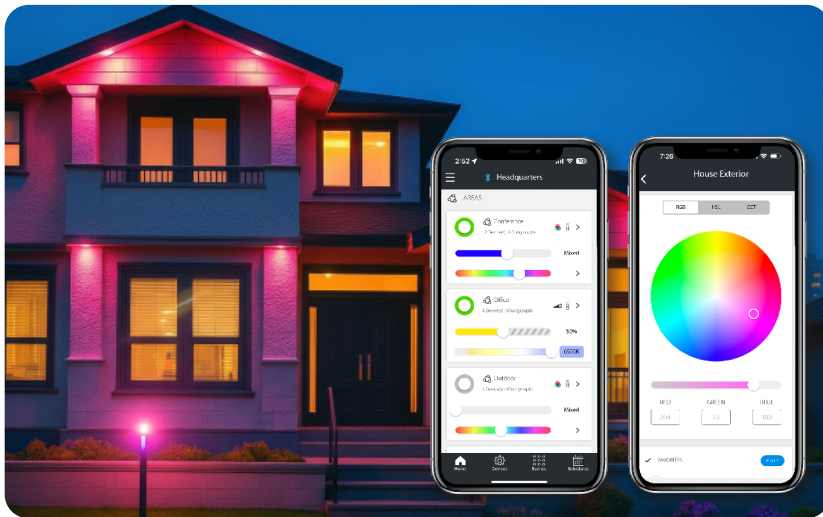
# EZPAN Field-Adjustable Flat Panels



## COLOR TUNING

Products available with color tuning options offer endless possibilities to enhance any application. Create Scenes and Schedules from the Lightcloud interface and choose the desired color temperature (2200K-6500K\*) or up to 16+ million colors\*. [Explore RGB color-tuning products.](#)

\*Color options may vary by product, see individual product specification sheet for more details.



SmartShift is the first lighting technology that can promote better sleep, health and happiness. Once installed alongside a Lightcloud control system, it automatically tunes the color and intensity of indoor lights throughout the day, mimicking the sun's changing light as it rises and sets. [Learn more about SmartShift.](#)



2700K

6500K

2700K

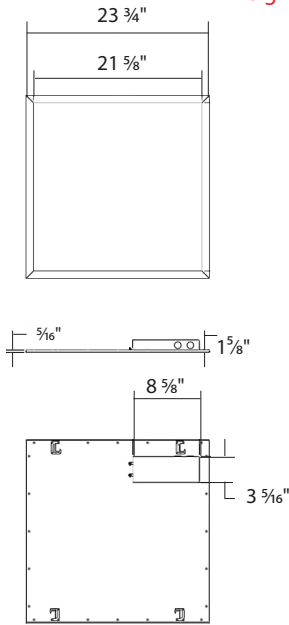
# EZPAN Field-Adjustable Flat Panels



## DIMENSIONS

### EZP2X2 / EZPHE2X2

Weight: 7.1 lbs



### EZP2X2/RGB

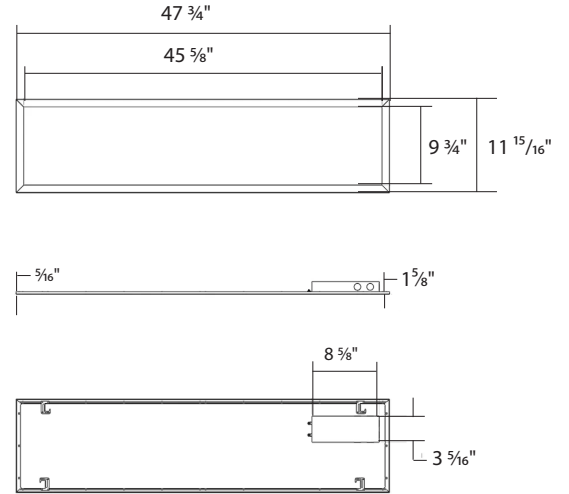
Weight: 6.68 lbs

### EZP1X4 / EZPHE1X4

Weight: 7.1 lbs

### EZP1X4/RGB

Weight: 6.3 lbs

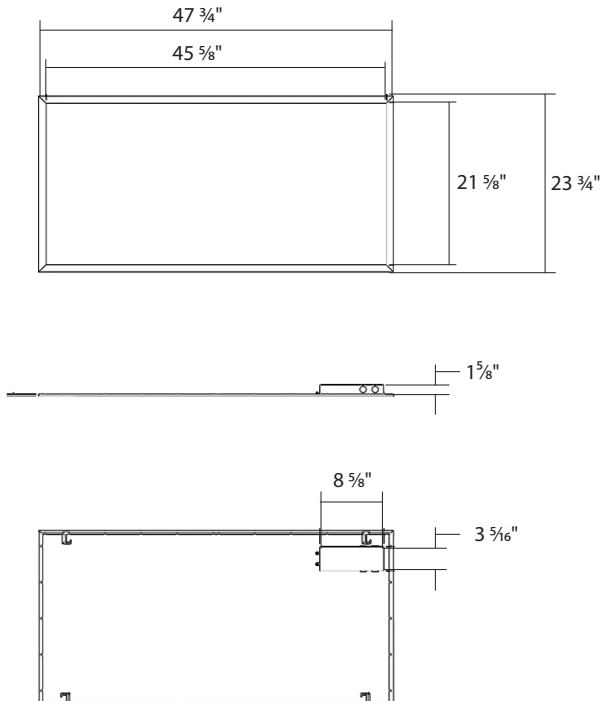


### EZP2X4 / EZPHE2X4

Weight: 13.4 lbs

### EZP2X4/RGB

Weight: 12.1 lbs



# EZPAN Field-Adjustable Flat Panels



## ACCESSORIES

IMAGE	CATALOG#	UPC	DESCRIPTION
	PMKEZPAN2X2	019813598192	EZPAN 2X2 PENDANT MOUNTING KIT WHITE
	PMKEZPAN1X4	019813598185	EZPAN 1X4 PENDANT MOUNTING KIT WHITE
	PMKEZPAN2X4	019813598208	EZPAN 2X4 PENDANT MOUNTING KIT WHITE
	RMKPANEL2X2	019813104966	LPANEL 2X2 RECESSED MOUNTING KIT WHITE
	RMKPANEL1X4	019813104997	LPANEL 1X4 RECESSED MOUNTING KIT WHITE
	RMKPANEL2X4	019813104980	LPANEL 2X4 RECESSED MOUNTING KIT WHITE
	SMKEZPAN2X2	019813598161	EZPAN 2X2 SURFACE MOUNTING KIT WHITE
	SMKEZPAN1X4	019813598154	EZPAN 1X4 SURFACE MOUNTING KIT WHITE
	SMKEZPAN2X4	019813598178	EZPAN 2X4 SURFACE MOUNTING KIT WHITE

## ORDERING MATRIX

### EZP Field-Adjustable

Family	Size / Wattage*	Color Temperature	Output	Driver	Controls	Battery Backup
<b>EZP</b>	<input type="text"/>	<input type="text"/>	<input type="text"/>	<input type="text"/>	<input type="text"/>	<input type="text"/>
	2X2 2'X2' / 40/30/25W 1X4 1'X4' / 40/30/25W 2X4 2'X2' / 50/40/30W	BLANK 3500/4000/5000K CCT Adjustable	BLANK None HE High Efficacy*	BLANK 120-277V, 0-10V Dimming	BLANK None	BLANK None /E Battery Backup

### EZP with Lightcloud Blue - Tunable White

Family	Size / Wattage	Color Temperature	Driver	Controls	Battery Backup
<b>EZP</b>	<input type="text"/>	<input type="text"/>	<input type="text"/>	<input type="text"/>	<input type="text"/>
	2X2 2'X2' / 40W 1X4 1'X4' / 40W 2X4 2'X2' / 50W	BLANK Tunable White 2700-6500K	BLANK 120-277V	/LCBS Lightcloud Blue W/ PIR Sensor /LCBS/MVS Lightcloud Blue W/MVS Sensor	BLANK None /E Battery Backup

### EZP with Lightcloud Blue - RGBW

Family	Size / Wattage	Color Temperature	Driver	RGB Color Tuning	Battery Backup
<b>EZP</b>	<input type="text"/>	<input type="text"/>	<input type="text"/>	<input type="text"/>	<input type="text"/>
	2X2 2'X2' / 40W 1X4 1'X4' / 40W 2X4 2'X2' / 50W	BLANK Tunable White 2200-4000K	BLANK 120-277V	/RGB Lightcloud Blue RGBCW 16+ Million Colors	BLANK None /E Battery Backup

\* When HE models are ordered, the 2'X2' and 1'X4' sizes offers selectable wattages of 36/30/25W, while 2'X4' size offers 50/40/30W.