



RAB

EZPAN[®]

More options, same incredible
energy savings and price.

The affordable, ultra-low-profile LED panel is available in
2'x2', 2'x4' and now 1'x4'.

EDGE-LIT PANELS



RAB's warranty is subject to all terms and conditions found at rablighting.com/warranty

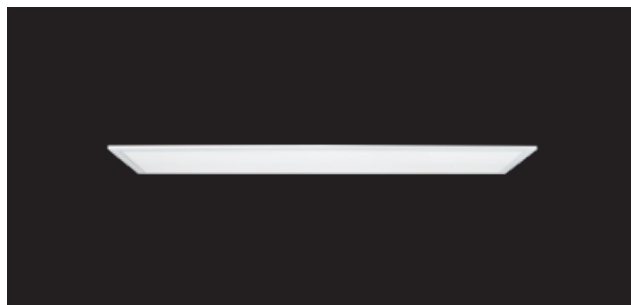
- Ultra efficient, up to 117 lm/W, reducing energy costs by up to 73%
- Perfect for shallow plenums
- Even and diffuse ambient illumination, ideal for spaces where glare-free lighting is required
- Offered in three sizes and five wattages:
1x4 (17W, 30W and 40W), 2x2 (17W, 30W and 40W) and 2x4 (30W, 40W and 50W)
- 0-10V dimmable driver, standard
- Emergency battery backup option available
- Available with factory-installed Lightcloud lighting control system Controller
- Microwave occupancy sensor available
- Available with integrated SmartShift™ circadian control



SmartShift-enabled EZPANs will adjust light levels and color temperature to match the natural pattern of the sun...a soft glow in the morning, energizing light during the day, and a warm hue in the evening.



An NEC-compliant junction box with flying leads makes wiring as simple as twisting a few wire nuts, and integral T-bar clips secure EZPAN to standard T-bar systems.



With a height just under 2", the EZPAN is an ideal solution for shallow plenums.



The EZPAN is available in three standard sizes (1x4, 2x2 and 2x4) for use in T-bar grids. We also offer three mounting kits for surface, pendant and recessed applications.

Performance - EZPAN

1 x 4	40W				30W				17W			
	5000K	4000K	3500K	3000K	5000K	4000K	3500K	3000K	5000K	4000K	3500K	3000K
Input Watts	40	40	40	40	31	32	32	31	20	20	20	20
Lumens	4,539	4,402	4,481	4,332	3,576	3,468	3,530	3,413	2,294	2,224	2,264	2,189
Efficacy (lm/W)	115	109	112	109	115	109	112	109	116	111	114	111
Color Accuracy (CRI)	81	82	83	81	81	82	83	81	81	82	83	81

2 x 2	40W				30W				17W			
	5000K	4000K	3500K	3000K	5000K	4000K	3500K	3000K	5000K	4000K	3500K	3000K
Input Watts	40	41	41	40	32	32	32	31	20	20	20	20
Lumens	4,708	4,542	4,571	4,518	3,643	3,515	3,537	3,496	2,181	2,104	2,118	2,093
Efficacy (lm/W)	117	112	112	114	114	110	109	111	108	104	104	106
Color Accuracy (CRI)	82	82	83	80	82	82	83	81	82	82	83	81

2 x 4	50W				40W				30W			
	5000K	4000K	3500K	3000K	5000K	4000K	3500K	3000K	5000K	4000K	3500K	3000K
Input Watts	50	51	51	50	40	41	41	41	32	32	33	32
Lumens	5,500	5,539	5,260	5,245	4,703	4,736	4,498	4,485	3,722	3,748	3,559	3,549
Efficacy (lm/W)	110	110	104	105	116	116	109	111	117	116	110	111
Color Accuracy (CRI)	82	81	83	81	82	81	83	81	82	81	83	81

Performance data is based on test performed at 120V.

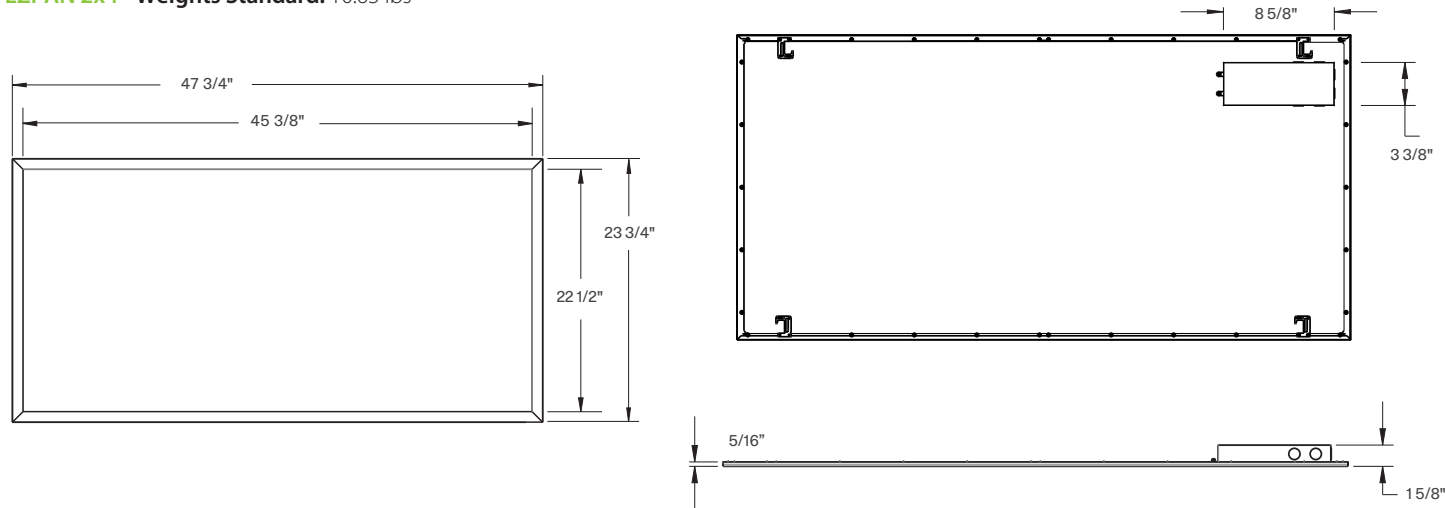
Performance - EZPAN with SmartShift

Note: SmartShift is the most advanced—yet easiest to use—circadian lighting system, which syncs white color tuning with the local sunrise and sunset. SmartShift is configurable down to the individual fixture for precision control and customization.

1 x 4	2700K - 6000K		2 x 2	2700K - 6000K		2 x 4	2700K - 6000K	
	Input Watts	Lumens		Input Watts	Lumens		Input Watts	Lumens
	45.8 - 46.5	5,123 - 5,335		45.5 - 46.6	5,265 - 5,747		46 - 47.6	5,517 - 5,929
		111.6 - 114.9			115.3 - 123.7			119.8 - 125.1
	83 - 87			82 - 86			82 - 86	

Dimensions and weights

EZPAN 2x4 - Weights Standard: 10.63 lbs

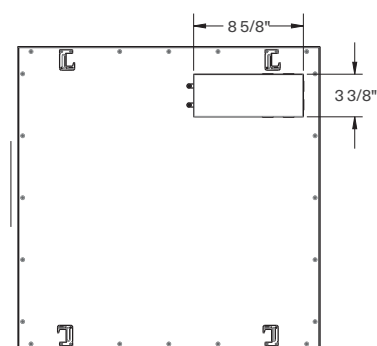
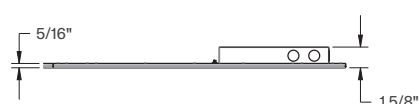
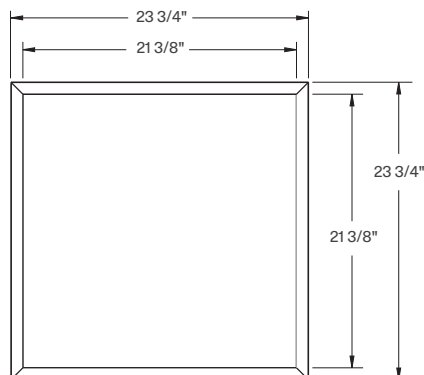


Dimensions and weights (Cont.)

EZPAN 2x2

Weights

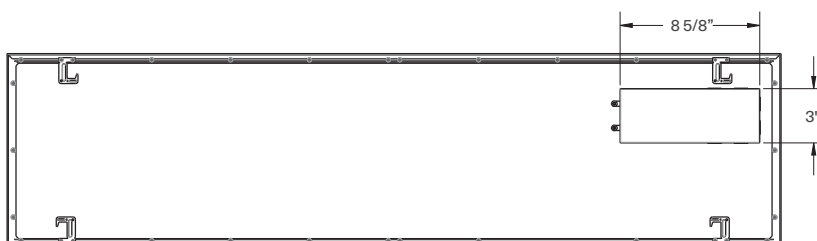
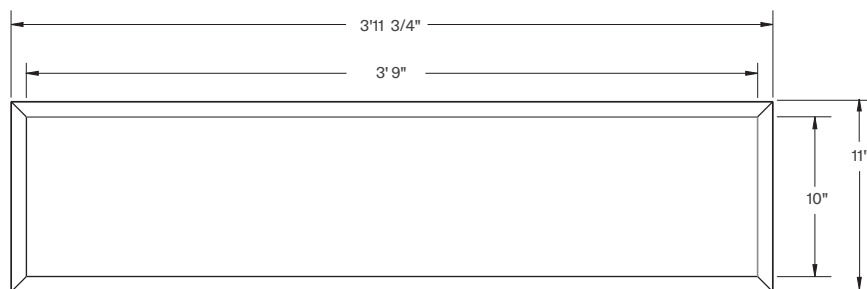
Standard: 6.22 lbs



EZPAN 1x4

Weights

Standard: 6.24 lbs



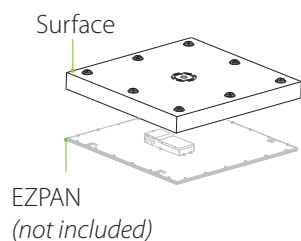
Mounting Accessory Kits

Surface Mounting Kits

SMKEZPAN - 1X4 Surface Mounting Kit

SMEKZPAN - 2X2 Surface Mounting Kit

SMKEZPAN - 2X4 Surface Mounting Kit

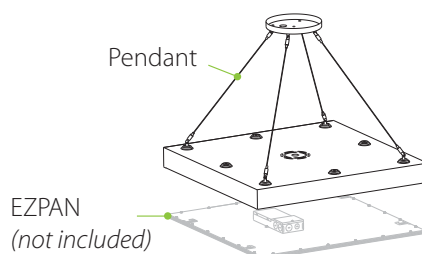


Pendant Mounting Kits

PMKEZPAN - 1X4 Pendant Mounting Kit

PMKEZPAN - 2X2 Pendant Mounting Kit

PMKEZPAN - 2X4 Pendant Mounting Kit

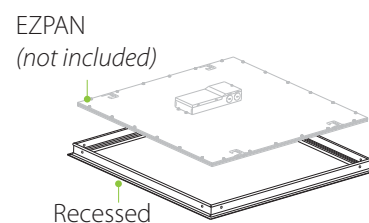


Recessed Drywall Mounting Kits

RMKPANEL - 1X4 Recessed Mounting Kit

RMKPANEL - 2X2 Recessed Mounting Kit

RMKPANEL - 2X4 Recessed Mounting Kit



Ordering information

Product Family	Size	Wattage	Color Temp.	Dimming (standard)	Control Options	Other Options
EZPAN				/D10		
	2X4 2' x 4'	50 50W (2' x 4')	Blank 5000K	/D10 0-10V Dimming	Blank No sensor	Blank None
	2X2 2' x 2'	40 40W (2' x 4', 2' x 2', 1' x 4')	N 4000K		/LC Lightcloud Controller	/E2 Emergency Battery Backup
	1X4 1' x 4'	30 30W (2' x 4', 2' x 2', 1' x 4')	YN 3500K			
		17 17W (2' x 2', 1' x 4')	Y 3000K			

Product Family	Size	Dimming (standard)	Smart	Control Options
EZPAN		/D10	/SS	/LC
SmartShift	2X4 2' x 4'	/D10 0-10V Dimming	/SS SmartShift	/LC Lightcloud Controller
	2X2 2' x 2'			
	1X4 1' x 4'			

Product Family	Size
SMKEZPAN	
Surface Mount Kit	2X4 2' x 4'
	2X2 2' x 2'
	1X4 1' x 4'

Product Family	Size
PMKEZPAN	
Pendant Mount Kit	2X4 2' x 4'
	2X2 2' x 2'
	1X4 1' x 4'

Product Family	Size
RMKPANEL	
Recessed Mount Kit	2X4 2' x 4'
	2X2 2' x 2'
	1X4 1' x 4'