

RAB



Bring your garage into the 21st century

Simple, economical LED lighting...with wings.



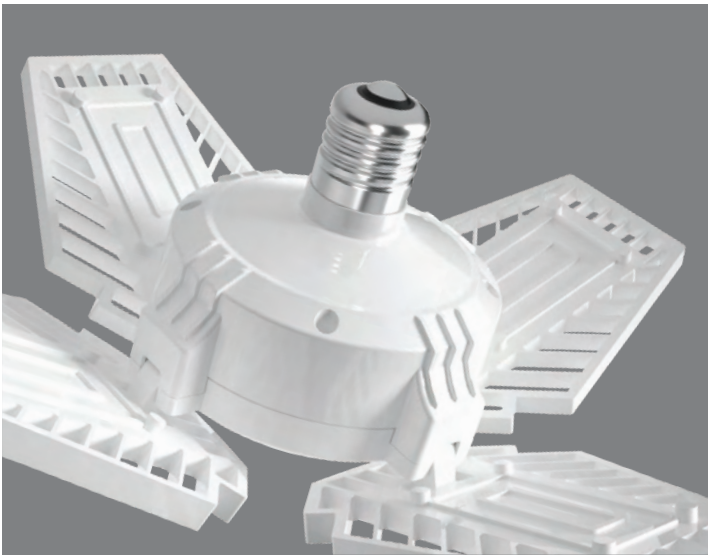
3-YEAR
NO-COMPROMISE
WARRANTY



25,000 HOURS

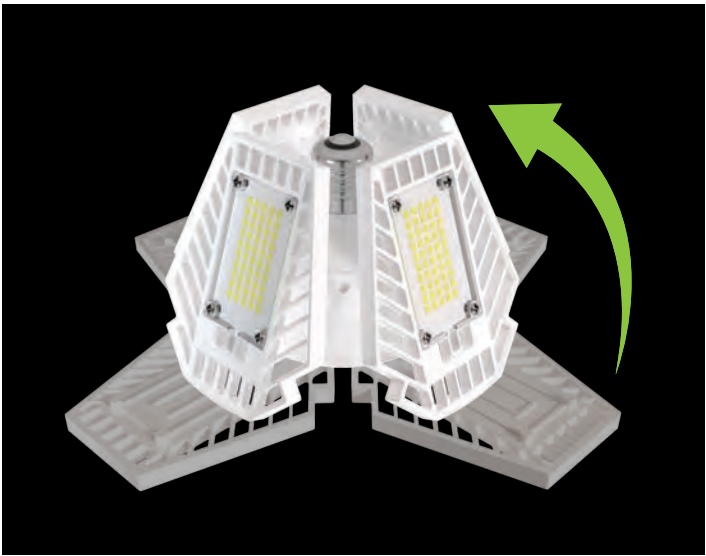


UL Damp Rated



As easy as screwing in a light bulb.

The garage lighter is designed with an E26 Medium Base that screws directly into a light socket, so no tools or hardware are required! This is plug-and-play at its best, with **8000 or 10,000 lumens** at a bright 5000K to make sure your garage is well lit.



90° Adjustable design.

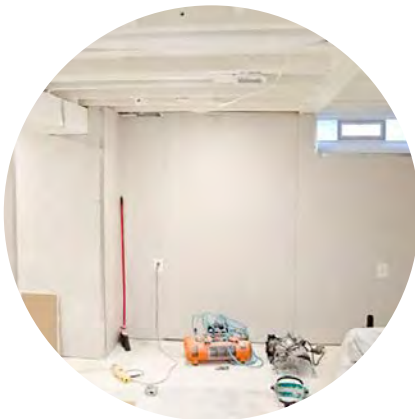
The adjustable fins allow you to customize where you direct the light in your space. Each panel can be angled from 0° to 90° as needed and can be independently fixed at different angles, for maximum 360° coverage.

Wherever there's a socket...

This small, versatile lamp was designed for use in areas like garages, workshops, basements, attics, storage areas and utility closets. If there's a socket in the ceiling, you are good to go!



Workshop



Unfinished Basement



Attic

Ordering Matrix

Product Family	Wattage	Orientation	Base Type	CRI/Color Temp	Installation Type	Type
HID		V	E26	850	BYP	GL
	80 65	V Vertical	E26 E26 Base	850 80 CRI/5000K	BYP Ballast Bypass	GL Garage Light