

GUSJR Field-Adjustable Wrap

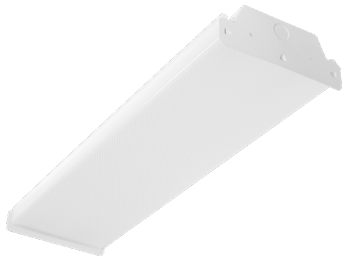


PROJECT:

DATE:

TYPE:

PREPARED BY:



GUSJR2

GUSJR4



KEY FEATURES

- Available models with selectable wattages:
2 Ft: 20/15/10W (factory default: 20W)
4 Ft: 40/30/20W (factory default: 40W)
- Field-adjustable CCT: 5000/4000/3500K (factory default: 4000K)
- Stand-alone or networked control. All models available with **microwave** or **PIR** motion sensor and **Lightcloud-enabled** controls.
- UL Listed for **damp** locations
- **0-10V** dimming
- 5-Year, limited warranty

Field-Adjustable, LED Wrap



0-10V



50,000 HOURS



FIELD ADJUSTABLE



DAMP RATED



POWERED BY LIGHTCLOUD

PERFORMANCE

GUSJR2	3500K	4000K	5000K	3500K	4000K	5000K	3500K	4000K	5000K
WATTAGE	20W			15W			10W		
INPUT WATTS	20.2W	19.4W	20.2W	15.2W	14.8W	15.1W	10.8W	10.6W	10.7W
LUMENS	2550	2790	2632	1931	2088	1979	1382	1474	1410
EFFICACY (LM/W)	126.2	143.8	130.3	127	141.1	131.1	128	139.1	131.8
CRI	83	85	84	84	85	84	84	85	84
VOLTAGE RATINGS									

GUSJR4	3500K	4000K	5000K	3500K	4000K	5000K	3500K	4000K	5000K
WATTAGE	40W			30W			20W		
INPUT WATTS	39.5W	37.8W	39.4W	29.9W	28.7W	29.8W	21W	20.4W	21W
LUMENS	5046	5540	5318	4002	4302	4213	2883	3061	3042
EFFICACY (LM/W)	127.7	146.6	135	133.8	149.9	141.4	137.3	150.1	144.9
CRI	83	85	83	83	85	83	84	85	83
VOLTAGE RATINGS	120-277V								

TECHNICAL SPECIFICATIONS

COMPLIANCE

UL Listed

Suitable for damp locations

IESNA LM-79 & LM-80 Testing

RAB LED luminaires and LED components have been tested by an independent laboratory in accordance with IESNA LM-79 and LM-80

DLC Listed

This product family is listed with the DesignLights Consortium (DLC). Individual SKUs within this family may carry either a DLC Standard or DLC Premium qualification. Please refer to the individual product specification sheet or the DLC Qualified Products List (QPL) at designlights.org to confirm the qualification status of a specific SKU prior to specification or purchase.

LED CHARACTERISTICS

LEDs

Long-life, high-efficacy, discrete, surface-mount LEDs

Color Uniformity

RAB's range of Correlated Color Temperature follows the guidelines of the American National Standard for Specifications for the Chromaticity of Solid State Lighting (SSL) Products, ANSI C78.377-2017.

CONSTRUCTION

Cold Weather Starting

The minimum starting temperature is -20°C (-4°F)

Cold Weather Starting for battery back-up

The minimum starting temperature is 0°C (32°F)

Maximum Ambient Temperature

Suitable for use in up to 45°C (113°F)

Maximum Ambient Temperature for battery back-up

Suitable for use in up to 50°C (122°F)

Mounting

Surface mounting standard. Through wiring kits included in the packaging for row mounting & VHOOKGUSJR ordered separately for vhook mounting.

Housing

Sheet metal stamping 24 gauge, cold-rolled steel

Lens

Diffused Polymethyl Methacrylate (PMMA)

Reflector

Sheet metal forming 24 gauge, cold-rolled steel with white powder coat

Finish

Formulated for high durability and long-lasting color

Green Technology

Mercury and UV free. RoHS-compliant components.

ELECTRICAL

Drivers:

Constant Current, Class 1, 120-277V, 50/60 Hz,

GUSJR2 20W: 120V: 0.17A, 208V: 0.10A, 240V: 0.09A, 277V: 0.08A

GUSJR2 15W: 120V: 0.13A, 208V: 0.07A, 240V: 0.07A, 277V: 0.06A

GUSJR2 10W: 120V: 0.08A, 208V: 0.06A, 240V: 0.05A, 277V: 0.04A

GUSJR4 40W: 120V: 0.36A, 208V: 0.21A, 240V: 0.18A, 277V: 0.16A

GUSJR4 30W: 120V: 0.27A, 208V: 0.16A, 240V: 0.14A, 277V: 0.12A

GUSJR4 20W: 120V: 0.18A, 208V: 0.11A, 240V: 0.10A, 277V: 0.09A

ELECTRICAL

Dimming Driver:

Driver includes dimming control wiring for 0-10V dimming systems. Requires separate 0-10V DC dimming circuit. Dims down to 10%.

THD:

GUSJR2: 7% at 120V, 7% at 277V

GUSJR4: 8% at 120V, 7% at 277V

Power Factor:

GUSJR2: 99.44% at 120V, 94.47% at 277V

GUSJR4: 99.56% at 120V, 95.91% at 277V

Surge Protection

L-N: 2KV

L/N-GND: 4KV

Battery Backup Light Loss Factor:

20%

OCCUPANCY SENSORS

Sensor Type: Passive Infrared (PIR) or Microwave (MVS)

Input Voltage: 12VDC

Operating Frequency: 50/60Hz

Input Current: 30mA

Operating Temperature: -40°F to 140°F (-20°C to 60°C)

Max Mounting Height: 40 ft. (PIR); 50 ft. (MVS)

Detection Range: PIR: 40 ft. diameter mounted at 40 ft. (/PIR & /LCBS); MVS: 50 ft. diameter mounted at 50 ft. (/MVS & /LCBS/MVS); PIR20[B] [/LCB] and MVS20[B] [/LCB] 20 ft. diameter mounted at 9 ft. (sold separately)

Daylight Sensing: The sensor will determine to trigger the light(s) on or not based on the daylight threshold level set.

Default Settings:

Motion Sensitivity: High

Brightness when triggered : 100%

Hold time: 1 minute (20 minutes for LCB sensors)

Standby to dim: 20%

Standby time: 1 minute

When vacant: Off

Adjustable Settings: Settings for Lightcloud Blue-enabled sensors can be adjusted using the mobile app. All other sensors will require XXXX

Remote to adjust the following sensor settings:

Standby to dim: 10%/20%/30%/50%

Standby time: 0s/10s/30s/1min/5min/10min/30min/60min/+∞

Daylight Threshold: 2Lux/10Lux/30Lux/50Lux/80Lux/120Lux/Disable

OTHER

Warranty

The RAB 5-year, limited warranty covers light output, driver performance and paint finish. RAB's warranty is subject to all terms and conditions found at rablighting.com/warranty.

Lifespan

50,000-hours LED Lifespan based on IES LM-80 results and TM-21 calculations

WIRELESS NETWORK LIGHTING CONTROLS

Lightcloud products offer integrated network lighting control for a truly wireless solution that allows you to manage RAB's various compatible devices. With RAB's patented Rapid Provisioning technology, devices can be quickly and easily commissioned for residential and commercial applications. Each device can communicate with other devices in the mesh network. With two Lightcloud systems to choose from, it's easy to implement controls anywhere.

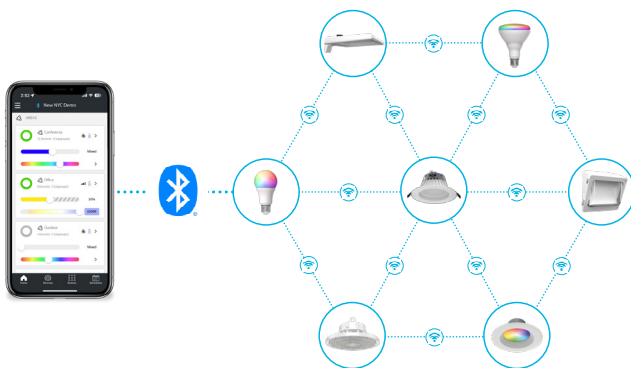


Learn more about Lightcloud wireless networked lighting controls.

Design Lights Consortium Network Lighting Controls:

- Interior Applications: N1XMLOEATB
- Exterior Applications: NHCZ2BIA17L

Lightcloud®



- Utilizes Bluetooth Mesh, eliminating the need for a Gateway or Hub
- Ideal for applications that need basic wireless control such as ON/OFF, dimming, color tuning, Schedules, and SmartShift
- Download the Lightcloud Blue mobile app for iOS or Android devices
- Add the XDIM/BRIDGE/LCB and LCGATEWAY to adopt premium Lightcloud Enterprise features

SIMPLE SETUP



Learn more about [Lightcloud Blue](#). Visit the [Lightcloud Blue Resources](#) page for more information on how to use the system.

Lightcloud®



- Utilizes a secure cellular and Zigbee mesh network that requires a Gateway or Hub (sold separately)
- Offers premium features like remote commissioning, demand response, BACnet integration, and more
- Download the Lightcloud Enterprise mobile app for iOS or Android devices

SIMPLE SETUP

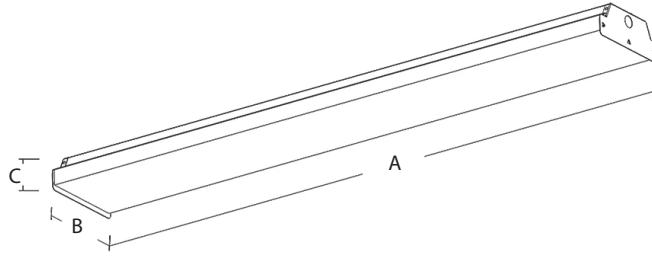


Learn more about [Lightcloud Enterprise](#). Visit the [Lightcloud Enterprise Resources](#) page for more information on how to use the system.

GUSJR Field-Adjustable Wrap



DIMENSIONS



MODEL#	A	B	C	Weight (Lbs)
GUSJR2	24 1/2"	6 3/4"	2 1/2"	5.1
GUSJR4	47 3/4"	6 3/4"	2 1/2"	9.6

ACCESSORIES

IMAGE	SKU#	UPC	DESCRIPTION
	VHOOKGUSJR	019813708874	VHOOK AND CHAIN FOR GUSJR, 2 PCS EACH
	MSR1	192552026055	MULTI-SENSOR REMOTE CONTROL IP20

ORDERING MATRIX

GUSJR Field-Adjustable, LED Wrap

Family	Size/Wattages	Color Temperature	Finish	Voltage	Options
GUSJR					
	2 2 Feet (20/15/10W) 4 4 Feet (40/30/20W)	BLANK 3500/4000/5000K	BLANK White	BLANK 120-277V, 0-10V Dimming	BLANK /E No Option /LC Battery Backup /LCB Lightcloud Controller /MVS Lightcloud Blue Controller /PIR Microwave Occupancy Sensor /LCBS Passive Infrared Occupancy Sensor /LCBS/MVS Lightcloud Blue PIR Sensor /MVS/E Lightcloud Blue MVS Sensor /PIR/E Microwave Occupancy Sensor w/ Battery Backup /LCBS/E Passive Infrared Occupancy Sensor w/ Battery Backup /LCBS/MVS/E Lightcloud Blue PIR Sensor w/ Battery Backup Lightcloud Blue MVS Sensor w/ Battery Backup