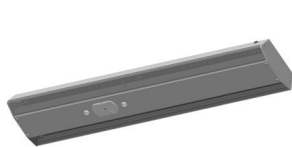


INSTRUCTIONS

TSLED™ INSTALLATION

RAB®

RAB Lighting is committed to creating high-quality, affordable, well-designed and energy-efficient LED lighting and controls that make it easy for electricians to install and end users to save energy. We'd love to hear your comments. Please call the Marketing Department at 888-RAB-1000 or email: marketing@rablighting.com



TSLED- 2FT



TSLED - 4FT

IMPORTANT

READ CAREFULLY BEFORE INSTALLING FIXTURE. RETAIN THESE INSTRUCTIONS FOR FUTURE REFERENCE.

RAB fixtures must be wired in accordance with the National Electrical Code and all applicable local codes. Proper grounding is required for safety. THIS PRODUCT MUST BE INSTALLED IN ACCORDANCE WITH THE APPLICABLE INSTALLATION CODE BY A PERSON FAMILIAR WITH THE CONSTRUCTION AND OPERATION OF THE PRODUCT AND THE HAZARDS INVOLVED.

WARNING: Make certain power is OFF before installing or maintaining fixture. No user serviceable parts inside.

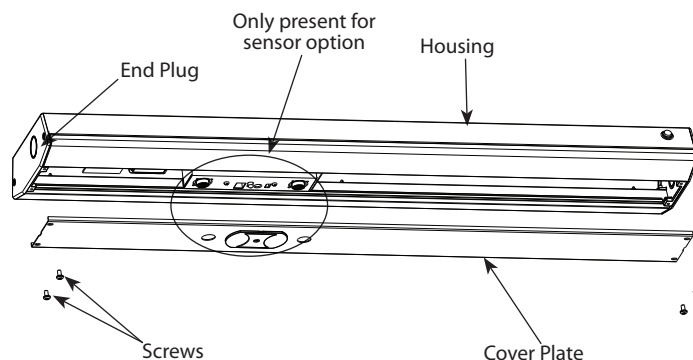
WARNING: To prevent wiring damage or abrasion, do not expose wiring to edges of sharp objects.

SURFACE MOUNTING

The fixture is suitable for indoor applications for ceiling or wall mounting.

1. Remove tamperproof **Screws (4)** from **Cover Plate**.
2. Mount **Housing** directly to sturdy surface by using **Key Hole Slots** on either end of the fixture. Use appropriate mounting hardware for the mounting surface.
3. Make electrical splices, referring to page 2 for details. Supply can come from back or through either **End Plug**. Use appropriate UL approved wire connectors as required by code to complete wiring.
4. Being careful not to pinch wires, replace **Cover Plate** and tighten **Screws (4)**.

Fig: 1

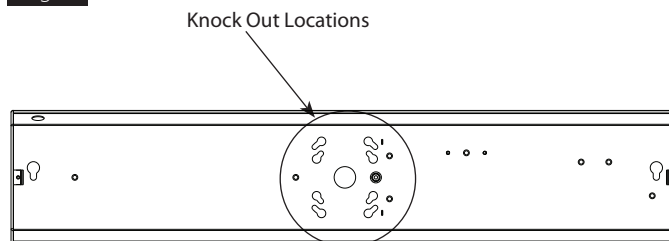


JUNCTION BOX MOUNTING

Mount to a recessed junction box (*provided by others*) as follows:

1. Remove tamperproof **Screws (4)** from **Cover Plate**.
2. Choose correctly spaced (4) **Knock Out Locations** as marked in **Fig. 4** based on junction box size. Outer knock outs need to be knocked out for use. Use appropriate mounting hardware for the mounting surface.
3. Make electrical splices, referring to page 2 for details. Use appropriate UL approved wire connectors as required by code to complete wiring.
4. Once connections are made push all wires back through access hole into Junction Box. Be careful not to pinch wires. Replace **Cover Plate** and tighten **Screws (4)**.

Fig: 2



INSTRUCTIONS

TSLED™ INSTALLATION



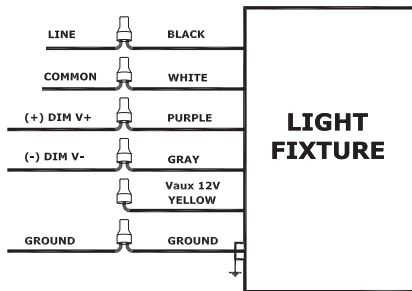
RAB Lighting is committed to creating high-quality, affordable, well-designed and energy-efficient LED lighting and controls that make it easy for electricians to install and end users to save energy. We'd love to hear your comments. Please call the Marketing Department at 888-RAB-1000 or email: marketing@rablighting.com

0-10V DIMMABLE WIRING

Universal voltage driver permits operation at 120V thru 277V, 50 or 60 Hz. For 0-10V Dimming, follow the wiring directions in Fig. 3.

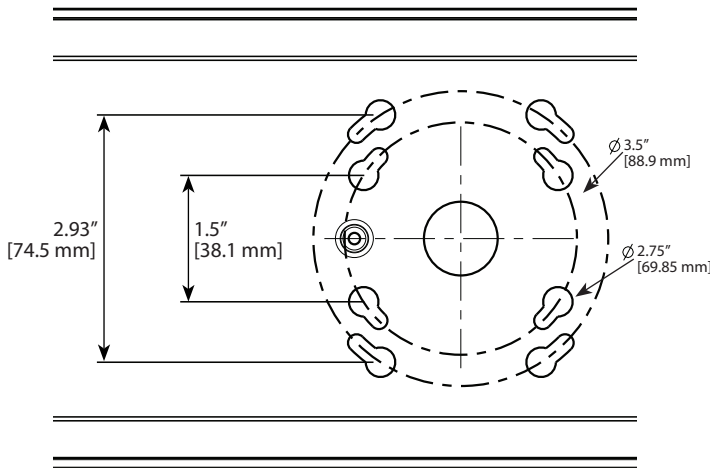
1. Connect the black fixture lead to the LINE supply lead.
2. Connect the white fixture lead to the COMMON supply lead.
3. Connect the GROUND wire from fixture to supply ground. Do NOT connect the GROUND of the dimming fixture to the output.
4. Connect the purple fixture lead to the (V+) DIM lead.
5. Connect the gray fixture lead to the (V-) DIM lead.
6. Cap the yellow fixture lead, if present. Do NOT connect.

Fig. 3



KNOCK OUT LOCATIONS

Fig. 4



TAMPERPROOF SCREWS

TSLED STAIRWELL fixtures are shipped with tamperproof screws for use with a Torx Screwdriver.



CLEANING & MAINTENANCE

CAUTION: Be sure fixture temperature is cool enough to touch. Do not clean or maintain while fixture is energized.

1. Clean polycarbonate lens with non-abrasive cleaning solution.
2. Do not open the fixture to clean the LEDs. Do not touch the LEDs.

TROUBLESHOOTING

1. Check that the line voltage at the fixture is correct. Refer to wiring directions.
2. Be sure the fixture is grounded properly.

Note: These instructions do not cover all details or variations in equipment nor do they provide for every possible situation during installation, operation or maintenance.