

RAB

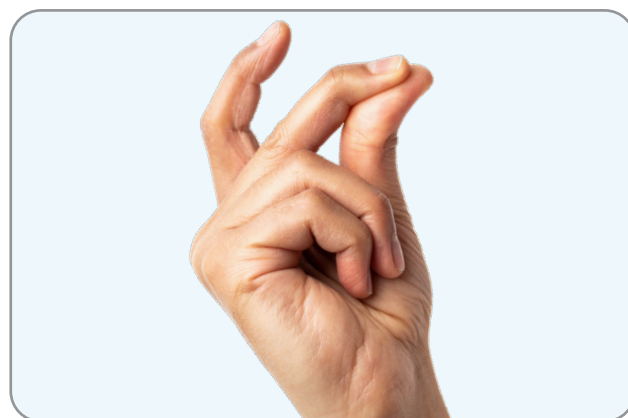
| Lightcloud Blue

Lighting Control Made Easy...

Lightcloud Blue is a powerful, flexible, simple lighting control system designed to manage lighting wirelessly, without the need of a Gateway or Hub. It's as easy as downloading the Lightcloud Blue app, connecting your enabled products, and quickly configuring them.

Rapid Provisioning

Rapid Provisioning is a patent-pending technology that allows users to easily commission devices in large groups (up to 100) rather than one at a time, so you can get hundreds of devices connected in minutes instead of hours—that's up to 10x faster than any other competing control system on the market!



Scalable and Flexible

Lightcloud Blue makes it simple to start small and scale up, letting you add up to five sites, each with up to 600 devices, for a total of 3,000 devices! Because it's so easy to grow, the system is equally capable of managing residential, commercial, or industrial applications.



Bluetooth® Mesh Connectivity

Lightcloud Blue devices are controlled via an independent, self-automated Bluetooth mesh system. Each device in that system can communicate directly with any other device in it, eliminating the need for a Lightcloud Gateway.

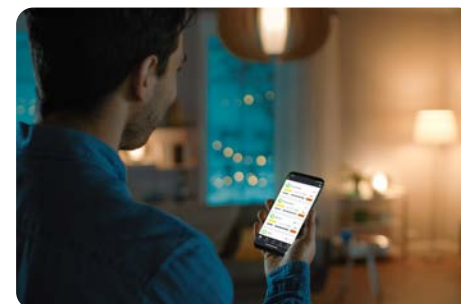


Easy Set Up

Building your Lightcloud Blue system is as simple as installing the lighting, turning it on, and opening the app on your mobile device. Once powered, products will enter the pairing mode automatically and the app instantly detects them.

On/Off and Dimming

Instantly control individual lights or adjust light levels in any area.



Areas

Set light levels for multiple fixtures in unison without the need for separate circuits.



Scenes

Create individual scenes that are tailored to a specific activity or event so that you can adjust light levels and color temperatures at the drop of a hat.



Scheduling

Create schedules for lights to turn on or off, dim, brighten, or change color temperature. Last-minute change? Schedules can be adjusted or disabled at any time from your smartphone.



SmartShift*

Our circadian lighting system automatically tunes the color and intensity of indoor lights throughout the day, mimicking the sun's changing light as it rises and sets.



Accessories

Adding features to your Lightcloud Blue site is simple with these various devices. Whether you're looking to integrate your lighting into a smart home system, benefit from SmartShift circadian scheduling, leverage daylight harvesting and motion detection, or simply add points of control, these tools have you covered.

Remote

The Lightcloud Blue Remote lets you control your lighting without your smartphone. Manage on/off switching, dimming, color temperature tuning, and set two programmable buttons for custom scenes. The remote also comes with a wall plate to easily add a point of control.



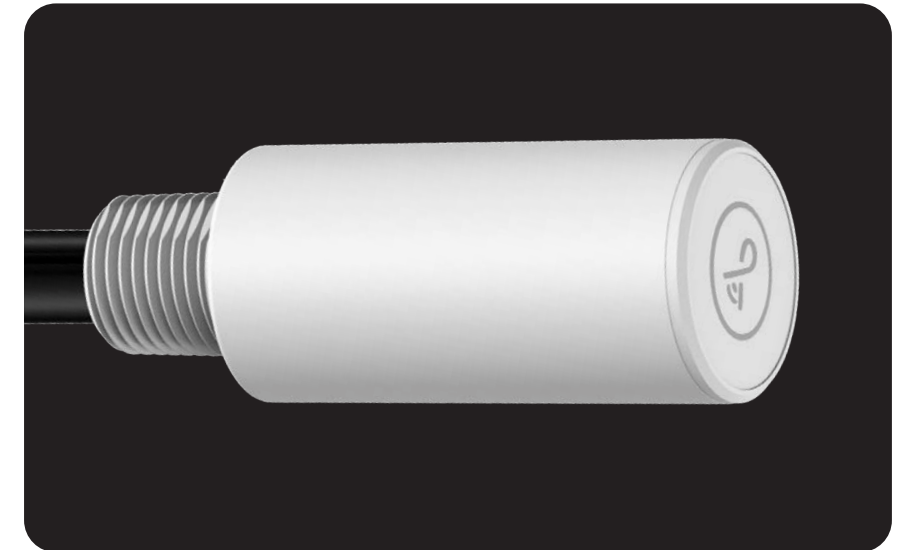
Nano

The Nano expands Lightcloud Blue's capabilities to include SmartShift™ circadian lighting, scheduling, and compatibility with Amazon® Alexa or Google® Nest. Simply plug the Nano into a USB power source to get started.



Controller

Turn any compatible 0-10V LED fixture into a Lightcloud Blue-enabled luminaire with a Lightcloud Blue Controller. Once installed, the mobile app will find, provision, and begin controlling your lighting...it's that easy.



Micro Sensor*

Designed for integration with EZPAN panels or SWISH center baskets, the Micro Sensor is available with either microwave or passive infrared detection and also acts as a daylight harvester.

**Requires a Lightcloud Blue Controller*



Dimmer

The Lightcloud Blue Dimmer is a decorator-style, in-wall dimmer, switch, and scene remote that can be configured to control any enabled lighting on your site.

Coming soon



Residential Applications

Smart homes afford us the ability to maximize control of our surroundings with the minimal amount of effort and Lightcloud Blue is no exception. Set schedules to fit your lifestyle, adjust for ambience, and even set your lights to turn on and off while you're away...you'll never have to worry about your lighting again.



6" Retrofit Downlight with White Baffle Trim

- Replaces 120V 75W Incandescent
- Tunable White: 2700 - 6500K
- Dimmable to 5%
- 95+ CRI
- E26 Edison Base Adapter



10W A19 Lamp

- Replaces 120V 60W Incandescent
- Tunable White: 2700 - 6500K
- Dimmable to 5%
- 95+ CRI
- E26 Edison Base



10W BR30 Lamp

- Replaces 120V 60W Incandescent
- Tunable White: 2700 - 6500K
- Dimmable to 5%
- 95+ CRI
- E26 Edison Base



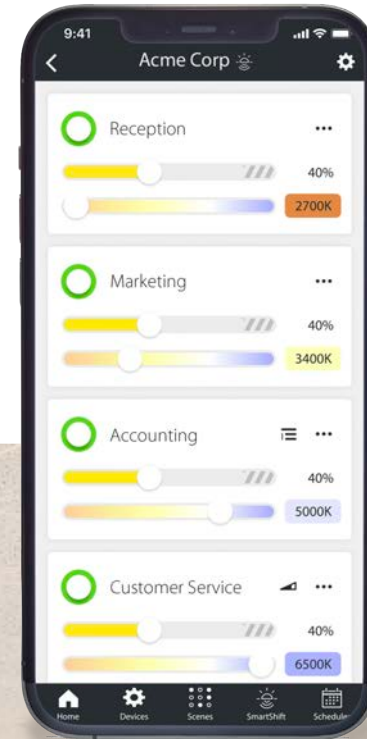
Lightcloud Blue Nano

- SmartShift Circadian Control
- Schedules
- Alexa/Google Home Integration



Commercial Applications

Not all offices require a large-scale-capacity lighting control system. Lightcloud Blue is perfectly suited for spaces that need control and functionality on a smaller scale. Leverage daylight harvesting, maximize alertness with SmartShift presets, and set schedules based on the average work day. If the office space grows, Lightcloud Blue can grow with it!



2x2 SWISH Center Basket with Passive Infrared Sensor



- 120-277V
- 0-10V Dimming
- Field-Adjustable Wattage
- Field-Adjustable CCT
- Daylight Harvesting
- 100,000-Hour Lifespan

10W A19 Lamp

- Replaces 120V 60W Incandescent
- Tunable White: 2700 - 6500K
- Dimmable to 5%
- 95+ CRI
- E26 Edison Base



10W BR30 Lamp

- Replaces 120V 60W Incandescent
- Tunable White: 2700 - 6500K
- Dimmable to 5%
- 95+ CRI
- E26 Edison Base



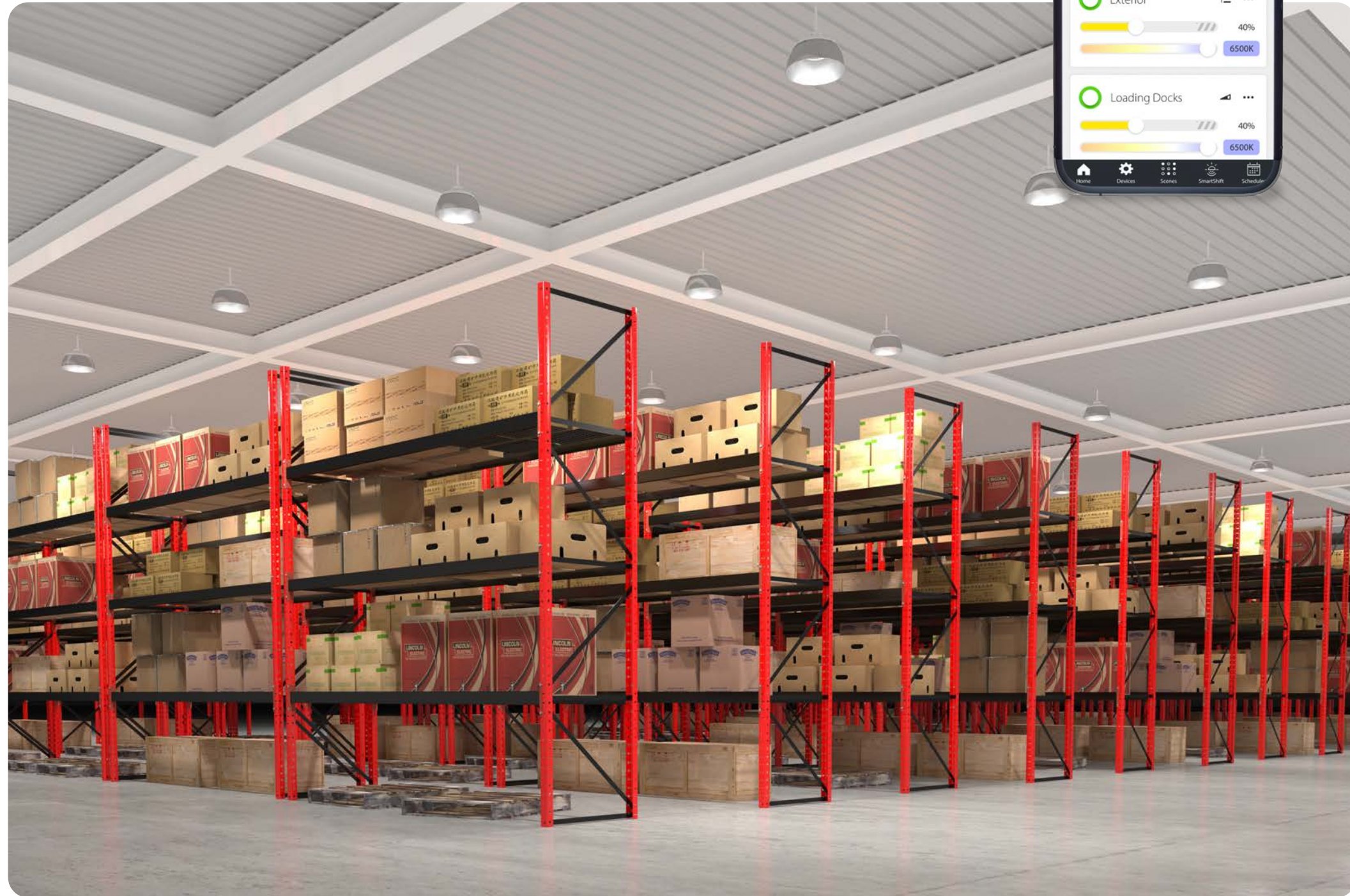
Lightcloud Blue Nano

- SmartShift Circadian Control
- Schedules



Industrial Applications

Much like commercial spaces, industrial spaces don't always require a large-scale-capacity lighting control system, either. Lightcloud Blue can maximize safety with motion detection sensors, leverage daylight harvesting for additional energy savings, and set schedules based on the average work day shift.



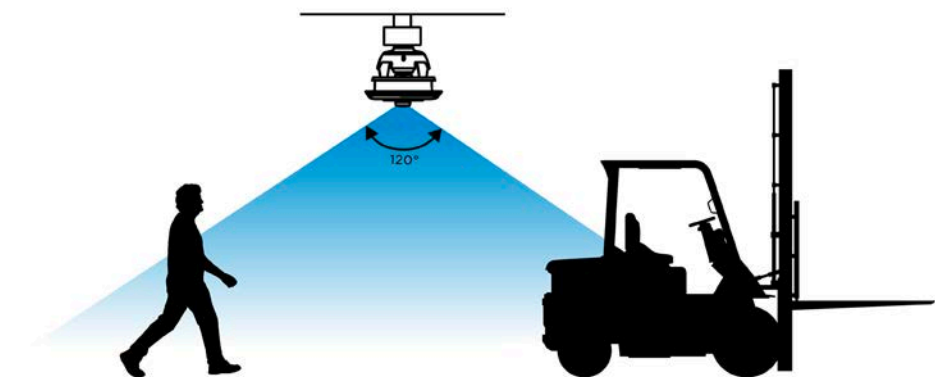
115W High Bay Lamp

- 120-277V
 - 0-10V Dimming
 - Tunable White: 3000 - 5000K*
 - Field-Adjustable Power: 200/250/400W*
 - EX39 Mogul Base
 - Integrated sensor port
 - 80+ CRI
 - 50,000-Hour Lifespan
- *Only when used with Controller*



PIR Sensor

- Wireless Range: 60 ft.
- Connector: 5-Pin Auxiliary Plug
- Sensor Coverage: 45 ft Diameter
- Mounting Height: Up to 25 ft



SmartShift

SmartShift* is the first lighting technology that can promote better sleep, health and happiness. With one click, SmartShift-enabled fixtures on a Lightcloud system will set themselves to your time zone and begin adjusting your light level and color temperature to match the natural pattern of the sun—a soft glow in the morning, energizing light during the day, and a warm hue in the evening. Create your own scenes and schedules, or temporarily override automated circadian controls for precision customization, all right from your phone. We've even included five of the most common presets for you!



2700K 6000K 2700K



*Requires the use of a Lightcloud Nano. Sold separately.

SmartShift Preset Options



Wellness

Uses the same "sunrise" and "sunset" times every day based on your site's schedule.



Nature

Uses the local sunrise and sunset times in your time zone, adjusting itself as days get shorter/longer.



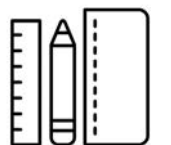
Office

Cooler temperatures from morning to noon for maximum alertness and reduced stimulation from noon to the end of the work day (5pm).



School

Cooler temperatures from morning to noon for maximum alertness and reduced stimulation from noon to the end of the school day (3pm).



Calm

Color temperatures change throughout the day but never go above 4500K, creating a warm, relaxing, calming atmosphere.



Easy Automation

Safety and security are critically important to everyone, and Lightcloud Blue offers two great ways to help maintain both: Activity Mode and Emergency Mode. Whether you're leaving your site unattended for long periods of time or in need of emergency assistance, these two settings are there to lend a hand.

Activity Mode

Set a schedule for when you're away, so that the lights will turn on and off in intervals, creating the illusion that an empty space is occupied.



Emergency Mode

Turn your home into a beacon for first responders. One click will start all your Lightcloud Blue lighting flashing to alert others in the area that there's a problem.



Interested?

rablighting.com

1 (844) - LIGHTCLOUD

RAB | Lightcloud Blue

©2022 RAB Lighting, Inc.

RAB is continually improving our products. Specifications may change without notice.
The designs of RAB fixtures are protected under U.S. and international intellectual property laws.



Lightcloud Blue | Accessories

Adding features to your Lightcloud Blue site is easy with these various devices.

Remote

The Lightcloud Blue Remote lets you control your enabled lighting from anywhere onsite. Manage on/off switching, dimming, color temperature tuning, and set two programmable buttons for custom scenes. It also comes with a wall plate that can be mounted to any surface, replace an existing wall switch, and easily add a point of control other than your phone.



LCBLUEREMOTE/W

Voltage: 3V
Amps: 10mA
Range: 60 feet
Battery Life: 2 years
Dimensions: 2 5/8"H x 1 5/16"L x 3/8"W
Weight: 0.21 lbs

Nano

NANO/LCB



Voltage: 5V

Amps: 500mA

Connectivity: USB-A
*Must be connected to a
2.4GHz Wi-Fi network*

Dimensions: 1 3/8"H x 1 1/16"L x
1 1/16"W

Weight: 0.07 lbs



The Nano expands Lightcloud Blue's capabilities to include SmartShift™ circadian lighting, scheduling, and compatibility with Amazon® Alexa or Google® Nest. It also offers manual control over all devices on a site, letting you turn lights on/off or cycle through color temperatures. Simply plug the Nano into a USB power source to get started.

Controller

Turn any 0-10V LED Dim-to-Off (DTO) fixture into a Lightcloud Blue-enabled luminaire with a Lightcloud Blue Controller. Once installed, the mobile app will find, provision, and begin controlling your lighting...it's that easy. The Controller's button can also be used to identify the device within the app, to turn the fixture on/off, and to set dimming level.



LCBLUECONTROL/W



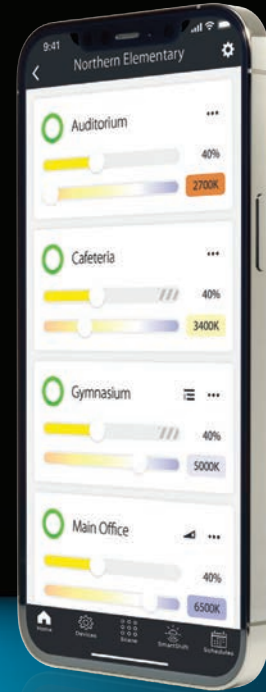
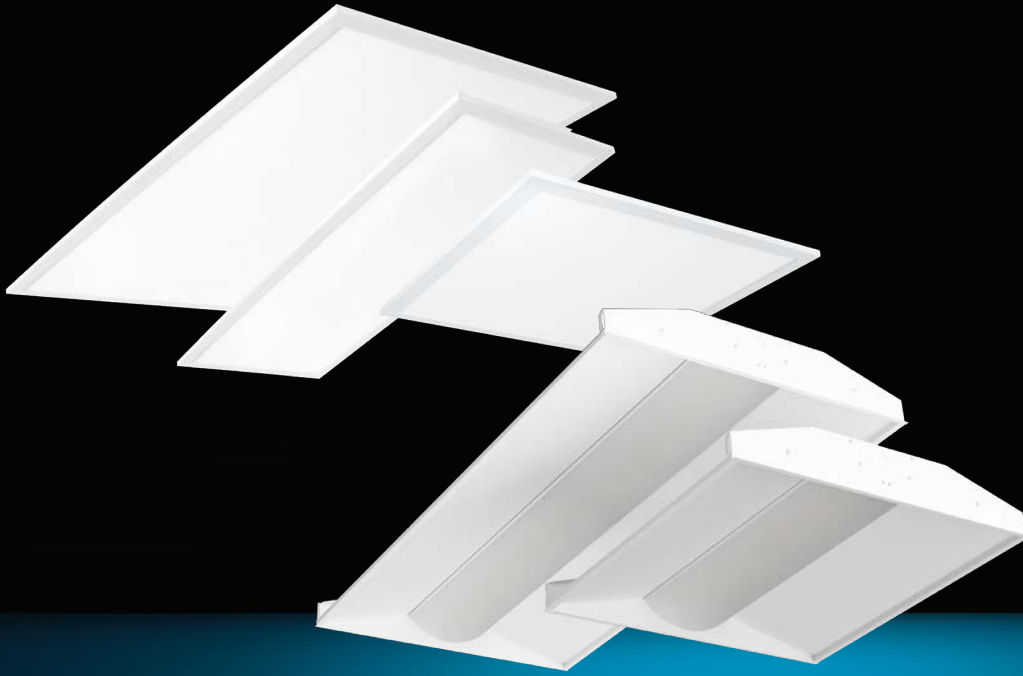
Voltage: 120 - 277V

LED Load Ratings: 120VA~1A@120V; 250VA~1A@277V

COMING SOON...

Lightcloud Blue Dimmer





Lightcloud Blue | EZPAN & SWISH

These Lightcloud Blue-enabled products will instantly connect to the system's app via Bluetooth Mesh, getting you up and running in minutes.

Features

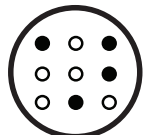
On/Off and Dimming

Control individual lights or instantly adjust light levels in any area. Most light sources can dim to as low as 10%.



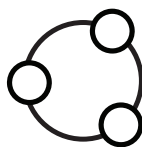
Scenes

Create individual scenes that are tailored to a specific activity or event so that you can adjust light levels at the drop of a hat.



Areas

Set light levels for multiple fixtures in unison. Creating numerous areas allows you to set the lighting that is best suited to the needs of each environment. Combine dimming and occupancy sensing for even more control.



Scheduling

Create schedules for lights to turn on or off, dim or brighten. Last-minute change? Schedules can be adjusted or disabled at any time from your smartphone with just a couple of quick clicks.



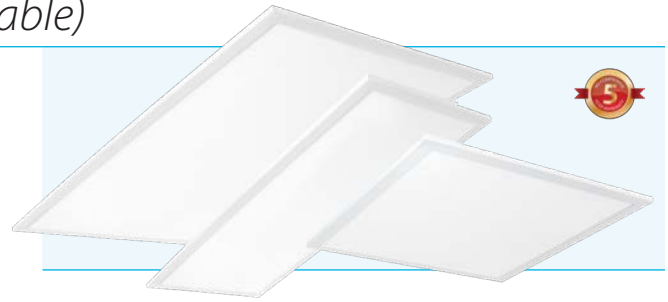


LLLC Rebates

EZPAN and SWISH fixtures with an integrated Lightcloud Blue Controller and Micro Sensor qualify for most LLLC utility rebates, which provide higher-than-average incentives. Luminaire Level Lighting Controls (LLLCs) are lighting products with wirelessly networked integrated sensors that enable luminaires within the system to communicate with each other. These systems provide multiple control capabilities in one package, from occupancy and vacancy sensing to daylight harvesting and data transmission, as well as combinations of each.

EZPAN (Standard & Field Adjustable)

The ultra-low-profile EZPAN panel is available in three form factors, with either static or field-adjustable wattage and CCT. All models come standard with 0-10V dimming and are offered with an optional PIR or MVS sensor and battery backup.

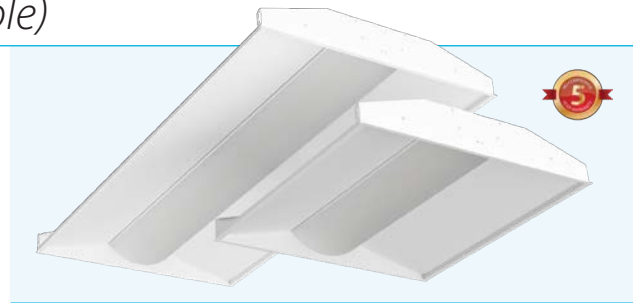


Product Family	Size	Wattage	CCT	Dimming	Control Options	Other Options
EZPAN				/D10		
	2X4 2' x 4'	50 50W (2' x 4')	Blank 5000K	/D10 0-10V Dimming	LCB Lightcloud Blue Enabled	Blank None
	2X2 2' x 2'	40 40W (2' x 4'; 2' x 2'; 1' x 4')	N 4000K		LCBS Lightcloud Blue Enabled w/PIR Sensor	/E2 Battery Backup
	1X4 1' x 4'	30 30W (2' x 4'; 2' x 2'; 1' x 4')	YN 3500K		LCBS/MVS Lightcloud Blue Enabled w/MVS Sensor	
		17 17W (2' x 2'; 1' x 4')	Y 3000K			

Product Family	Size	Dimming	Control Options	Other Options
EZPANFA		/D10		
	2X4 2' x 4'	/D10 0-10V Dimming	LCB Lightcloud Blue Enabled	Blank None
	2X2 2' x 2'		LCBS Lightcloud Blue Enabled w/PIR Sensor	/E2 Battery Backup
	1X4 1' x 4'		LCBS/MVS Lightcloud Blue Enabled w/MVS Sensor	

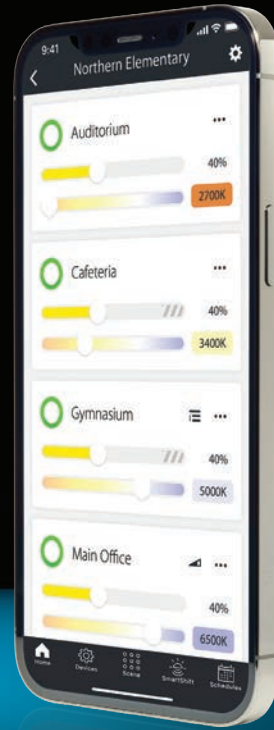
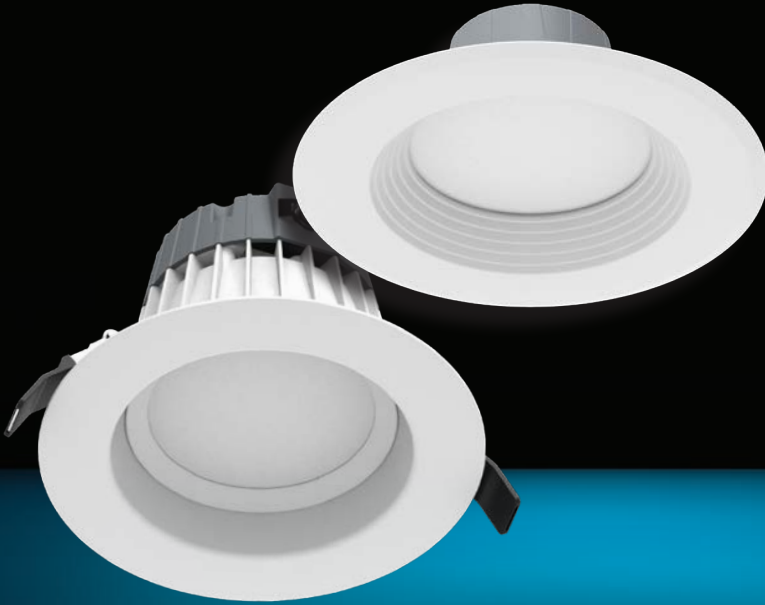
SWISH (Standard & Field Adjustable)

The SWISH center basket is available in two form factors, with either static or field-adjustable wattage and CCT. All models come standard with 0-10V dimming and are offered with an optional PIR or MVS sensor and battery backup.



Product Family	Size	Wattage	CCT	Dimming	Control Options	Other Options
SWISH				/D10		
	2X4 2' x 4'	49 49W (2' x 4')	Blank 5000K	/D10 0-10V Dimming	LCB Lightcloud Blue Enabled	Blank None
	2X2 2' x 2'	39 39W (2' x 4')	N 4000K		LCBS Lightcloud Blue Enabled w/PIR Sensor	/E2 Battery Backup
		29 29W (2' x 2')	YN 3500K		LCBS/MVS Lightcloud Blue Enabled w/MVS Sensor	
		19 19W (2' x 2')	Y 3000K			

Product Family	Size	Dimming	Control Options	Other Options
SWISHFA		/D10		
	2X4 2' x 4'	/D10 0-10V Dimming	LCB Lightcloud Blue Enabled	Blank None
	2X2 2' x 2'		LCBS Lightcloud Blue Enabled w/PIR Sensor	/E2 Battery Backup
			LCBS/MVS Lightcloud Blue Enabled w/MVS Sensor	



Lightcloud Blue | Downlights

All Lightcloud Blue-enabled downlights will instantly connect to the system's app via Bluetooth Mesh, getting you up and running in minutes.

Features



Tunable White: Color temperature that is fully adjustable within the specified range



SmartShift: Circadian lighting adjusts light levels and CCT to match the natural pattern of the sun



Natural Spectrum Technology: Emits less sleep-disturbing blue light, promoting healthier sleep. Also renders colors much more accurately so you can see them as they truly are.



TITLE 20



TITLE 24



ENERGY STAR



FCC COMPLIANT



IC RATED



WET RATED

6" Retrofit

This popular retrofit downlight is ideal for both new construction and retrofit applications. Offered in a baffled trim, it's dimmable and delivers ultra-high CRI (California Title 20 and JA8 compliant). The low-profile design makes it compatible with most recessed housings, and installation is quick and easy, with torsion springs for 5"/6" cans. An Edison base adapter is also included.



LCBR6R119TW120WB-SS-NS

Replaces: 18W CFL/75W INC

Wattage: 11W

Voltage: 120V

UL Listing: Wet Rated

Dimming: Down to 5%

CCT: 2700 - 6500K

CRI: 95+

Lifespan: 50,000 Hours



6" Commercial

LCBC6R189TWUNVWS-SS-NS

Replaces: 32W CFL/150W INC

Wattage: 18W

Voltage: 120-277V

UL Listing: Wet Rated

Dimming: Down to 5%

CCT: 2700 - 6500K

CRI: 95+

Lifespan: 50,000 Hours



This high-performance, 18W downlight is optimized for both new construction and retrofit applications, with a universal, 120-277V onboard driver and 0-10V dimming. Adjustable, spring-loaded retention tabs keep the fixture secure after installation, and extension ring accessories make it easy to use the 6" downlight in 8" housings.

COMING SOON...

4" Retrofit



4" and 6" Wafer



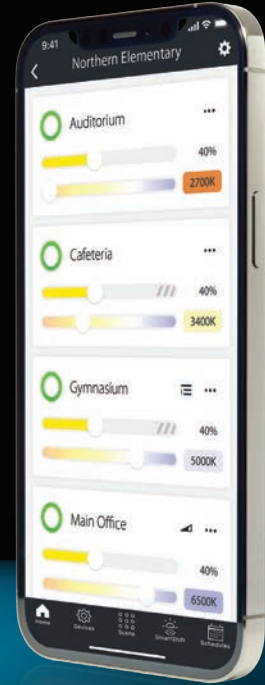
4" and 6" RGB Retrofit



4" and 6" RGB Wafer



...and much more!



Lightcloud Blue | Lamps

All Lightcloud Blue-enabled lamps will instantly connect to the system's app via Bluetooth Mesh, getting you up and running in minutes.

Features



Tunable White: Color temperature that is fully adjustable within the specified range



SmartShift: Circadian lighting adjusts light levels and CCT to match the natural pattern of the sun



Natural Spectrum Technology: Emits less sleep-disturbing blue light, promoting healthier sleep. Also renders colors much more accurately so you can see them as they truly are.

A19

The most commonly used lamp shape, this A19 is engineered with Lightcloud Blue capability. Designed with durable plastic construction and a frosted lens, this A19 produces smooth, diffuse light with highest color rendering accuracy. It can be used in closed or open fixtures, in dry or damp locations, and carries RAB's 3-year, no-compromise warranty.



LCBA19-10-E26-9TW-SS-NS

Replaces: 60W Incandescent
Wattage: 10W
Voltage: 120V
Base: E26 Edison
CCT: 2700 - 6500K

Dimming: Down to 5%
CRI: 95+
Lifespan: 25,000 Hours



BR30

LCBBR30-10-E26-9TW-SS-NS

Replaces: 65W Halogen
Wattage: 10W
Voltage: 120V
Base: E26 Edison
CCT: 2700 - 6500K

Dimming: Down to 5%
CRI: 95+
Lifespan: 25,000 Hours



This energy-efficient replacement for halogen and incandescent reflector lamps is designed with durable plastic to reduce breakage and a frosted lens for smooth, diffuse light. It is rated for use in closed and open fixtures, in dry or damp locations, and carries RAB's 3-year, no-compromise warranty.

Decorative Filament

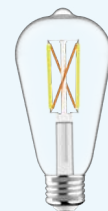
Filament-style LED lamps offer a unique traditional appearance for decorative and mood-sensitive needs. Models are available in A19, ST19, G25 and B11 shapes for the most-often-used applications. They are rated for use in closed and open fixtures, in dry, damp, or wet locations, and carry RAB's 3-year, no-compromise warranty.



LCBA19-6-E26-9TW-F-C-SS

Replaces: 60W Incandescent
Wattage: 6W
Voltage: 120V
Base: E26 Edison
CCT: 2200 - 4500K

Dimming: Down to 5%
CRI: 90+
Lifespan: 15,000 Hours



LCBST19-6-E26-9TW-F-C-SS

Replaces: 60W Incandescent
Wattage: 6W
Voltage: 120V
Base: E26 Edison
CCT: 2200 - 4500K

Dimming: Down to 5%
CRI: 90+
Lifespan: 15,000 Hours



LCBB11-5-E26-9TW-F-C-SS

Replaces: 60W Incandescent
Wattage: 5W
Voltage: 120V
Base: E26 Edison
CCT: 2200 - 4500K

Dimming: Down to 5%
CRI: 90+
Lifespan: 15,000 Hours



LCBG25-6-E26-9TW-F-C-SS

Replaces: 60W Incandescent
Wattage: 6W
Voltage: 120V
Base: E26 Edison
CCT: 2200 - 4500K

Dimming: Down to 5%
CRI: 90+
Lifespan: 15,000 Hours



T8 Linear Tubes

These popular 4 ft linear tubes are a direct replacement for fluorescent lamps and are available in both Type A (Ballast Compatible) and Type B (Ballast Bypass) styles.

The Type A installs directly to the existing ballast for quick "plug and play" use. The Type B's integral driver allows the lamp to be wired directly to line voltage and accepts single-ended or double-ended wiring, making it super flexible for various applications. Both are built from durable plastic, are NSF Listed and carry RAB's 5-year, no-compromise warranty.



LCBT8-14-48P-8TW-DIR-SS

Type: Ballast Compatible (A)
Replaces: 25/28/32W Fluorescent
Wattage: 14W
CRI: >80
CCT: 2700 - 6500K

Voltage: Ballast Dependent
Base: G13
Dimming: Down to 5%
Lifespan: 50,000 Hours



LCBT8-18-48P-8TW-SD-BYP-SS

Type: Ballast Bypass (B)
Replaces: 32W Fluorescent
Wattage: 18W
CRI: >80
CCT: 2700 - 6500K

Voltage: 120-277V
Base: G13
Dimming: Down to 5%
Lifespan: 50,000 Hours



COMING SOON...

T8 Type C



RGB A19 & BR30



Garage Lighter



HID Replacements



...and much more!



A19, BR30 and decorative only



T8 Tubes only



T8 Tubes only

rablighting.com

1 (844) - LIGHTCLOUD