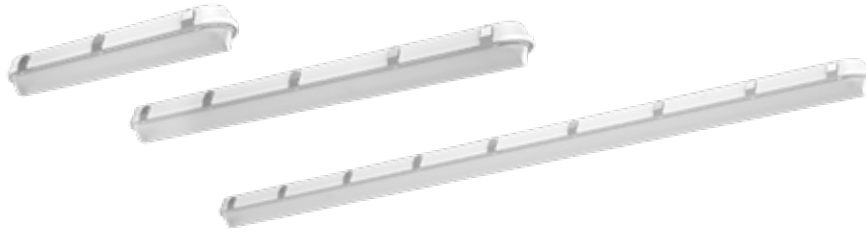


SHARK® Linear LED Washdown



2ft. 4ft. 8ft.

Project: _____
Date: _____
Type: _____
Prepared by: _____



Technical Specifications

UL Listed:

Suitable for wet locations

UL 94:

5VA flame classification

NSF:

NSF Certified by public Health and Safety

NEMA Rating:

4X, protected against corrosion

IP Rating:

Ingress Protection rating of IP66 for dust and water

Dimming:

0-10V, standard down to 10%

Ambient Operating Temperature:

120-277V: -30°C (-22°F) to 40°C (104°F)

480V: -40°C (-40°F) to 40°C (104°F)

Surge Protection:

4kV surge protection (standard)

Lifespan:

100,000-hour LED lifespan based on IES LM-80 results and TM-21 calculations

LEDs:

Long-life, high-efficacy, discrete, surface-mount LEDs

Finish:

White

Gaskets:

EVA

Lens:

Textured, diffuse polycarbonate lens for low glare and maximum protection

Drivers:

Constant Current Class 2, 120-277V, 50/60 Hz

Reflector:

White painted sheet metal

Housing:

IK09 impact-resistant polycarbonate with 5VA flame rating* 1/2" openings for conduit and bushing/cord entry

*Polycarbonate is affected by cleaning agents or other liquids containing partial solvents such as low molecular weight aldehydes and ethers, ketones, esters, aromatic hydrocarbons and perchlorinated hydrocarbons. Please go to rablighting.com for a detailed list of damaging chemicals.

Mounting:

Quick-mount, surface, stainless steel spring clips and V-Hook with bracket screws are supplied. 3 additional mounting accessory kits available.

Green Technology:

Mercury and UV free. RoHS-compliant components.

Color Stability:

LED color temperature is warranted to shift no more than 200K in CCT over a 5-year period

Color Uniformity:

RAB's range of CCT (Correlated Color Temperature) follows the guidelines of the American National Standard for Specifications for the Chromaticity of Solid State Lighting (SSL) Products, ANSI C78.377-2017

Warranty:

RAB warrants that our LED products will be free from defects in materials and workmanship for a period of five (5) years from the date of delivery to the end user, including coverage of light output, color stability, driver performance and fixture finish. RAB's warranty is subject to all terms and conditions found at rablighting.com/warranty.

Performance

	2-Foot		4-Foot		8-Foot	
5000K Color Temperature						
Nominal Watts	18W	25W	36W	50W	70W	100W
Input Watts	20	24	36	48	68	88
Output Lumens	2,307	3,009	5,079	6,862	9,919	13,181
Lumens Per Watt	115	127	143	142	145	150
Color Accuracy (CRI)	84	84	86	86	87	86
4000K Color Temperature						
Nominal Watts	18W	25W	36W	50W	70W	100W
Input Watts	19	24	36	48	69	90
Output Lumens	2,310	3,012	5,109	6,881	10,134	13,240
Lumens Per Watt	120	127	143	143	146	147
Color Accuracy (CRI)	85	85	85	85	85	85
3500K Color Temperature						
Nominal Watts	18W	25W	36W	50W	70W	100W
Input Watts	18	24	36	49	69	90
Output Lumens	2,206	2,877	5,010	6,607	10,026	12,792
Lumens Per Watt	120	122	140	136	145	143
Color Accuracy (CRI)	84	84	87	87	87	87

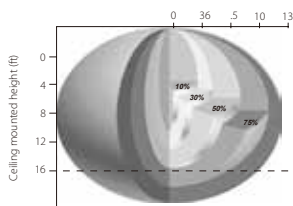
Control Specifications

Lightcloud Controls

- Wireless switching, 0-10V dimming, and power monitoring with a smaller footprint for 3A applications
- Easy setup - simply power on, confirm device connectivity and call 844-LIGHTCLOUD
- Small profile for concealed installations
- Cloud-based management - no software to install or maintain
- Connects to Lightcloud Gateway and other Lightcloud devices
- Connects via a secure, encrypted, and self-healing 2.4 GHz wireless mesh network
- Repeater Mode to extend range of wireless mesh network
- If power to Controller is lost, notification is shown in the Lightcloud application
- If communication is lost, Controller can fall back to a customizable emergency state

Microwave Sensor

- Completely concealed behind diffused light guide footprint for 3A applications
 - 24-hour daylight monitoring dawn/dusk sensor
 - Tri-level dimming control based upon occupancy (also known as corridor function)
 - 1-10V dimming control method
 - One-touch daylight learning via remote control
 - Zero crossing detection circuit reduces in-rush current and prolongs relay life
 - Loop-in and loop-out terminal for efficient installation
 - Remote sold separately
- Ordering code: MVSREM



Battery Backup



- Powers the fixture for a minimum of 90 minutes in the event of a power failure

Light Loss Factors:

4 ft.	8 ft.
36W: 0.625	70W: 0.357
50W: 0.47	100W: 0.25

Dimensions

2ft.
Weight: 5.5 lbs

4ft.
Weight: 8.5 lbs



8ft.
Weight: 14 lbs



Ordering Matrix

Product	Length	Wattage	Color Temp	Finish	Driver Options	Options						
SHARK				W								
	2	2ft	18	18W (2ft)	Blank	5000K	W	White	/D10	010V dimming,120-277V	Blank	No option
	4	4ft	25	25W (2 ft)	N	4000K			/480/D10	010V dimming,480V†	/E2	Emergency battery backup**
	8	8ft	36	36W (4 ft)	YN	3500K					/LC	Lightcloud™ Controller, 120-277V
			50	50W (4 ft)							/MVS	Microwave motion sensor, 120-277V‡
			70	70W (8 ft)								
			100	100W (8 ft)								

UL MARINE LISTED (Not NSF Certified)

Product	Length	UL Listing	Wattage	Color Temp	Finish	Driver Options				
SHARK		M			W					
	2	2ft	18	18W (2ft)	Blank	5000K	W	White	/D10	010V dimming,120-277V
	4	4ft	25	25W (2 ft)	N	4000K			/480/D10	010V dimming,480V†
	8	8ft	36	36W (4 ft)	YN	3500K				
			50	50W (4 ft)						
			70	70W (8 ft)						
			100	100W (8 ft)						