



RAB[®]



SHARK[®]

Impact-resistant linear LED washdown.
Three sizes, IP66 rated, certified for
food-processing sites.

For more product data, see Family Spec Sheets on rablighting.com

*Marine-listed models are not NSF certified

**RAB's warranty is subject to all terms and conditions found at rablighting.com/warranty

*Visit rablighting.com to see which models are DLC listed



NATIONAL SANITATION
FOUNDATION



DIMMABLE



AMERICAN BUREAU
OF SHIPPING



LIGHTCLOUD
COMPATIBLE



IP66



MARINE LISTED
MODELS*



1000,000-HOUR
LED LIFESPAN



LISTED SUITABLE
FOR WET LOCATION



480V OPTIONAL



DLC RATED[†]



BATTERY BACKUP



5-YEAR, NO-
COMPROMISE
WARRANTY**

Multiple power packages.

SHARK is available in 3 sizes and 6 power packages:
8 ft (100W and 70W), 4 ft (50W and 36W) and 2 ft (25W and 18W).

Low maintenance.

SHARK is ideal for tunnels, stairwells and other hard-to-reach areas where revamping is difficult and costly.

Built to last.

All standard models are NSF certified, ABS approved, and IP66 rated.
UL Marine listed models available (not NSF certified).

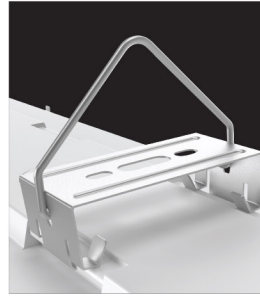
Impact-resistant construction.

SHARK was designed for heavy-duty applications, with durable, 5VA impact-resistant polycarbonate housing.

Mounting options and accessories.

All models come standard with surface-mount brackets and V-hooks for chain mounting. Accessory mounting kits are available for angled surface or junction box mounting.

Mounts



Chain-mounted brackets (standard)



Surface mount (standard)

Accessories



45° Angle, surface-mount bracket



Junction box mounting bracket



Tamperproof kit

Ordering Matrix

UL Damp Locations

Product Family	Length	Wattage	Color Temp	Finish	Driver	Options					
SHARK				W							
	2 4 8	2ft. 4ft. 8ft.	18 25 36 50 70 100	18W (2ft) 25W (2ft) 36W (4ft) 50W (4ft) 70W (8ft) 100W (8ft)	Blank N YN	5000K 4000K 3500K	W White	/D10 /480/D10	010V dimming, 120-277V 010V dimming, 480V†	Blank /E2 /LC /MVS	No backup Emergency backup** Lightcloud Controller 120-277V Microwave motion sensor, 120-277V§

UL Marine Listed (Not NSF Certified)

Product Family	Length	UL Listing	Wattage	Color Temp	Finish	Driver				
SHARK		M			W					
	2 4 8	2ft. 4ft. 8ft.	M Marine Listed	18 25 36 50 70 100	18W (2ft) 25W (2ft) 36W (4ft) 50W (4ft) 70W (8ft) 100W (8ft)	Blank N YN	5000K 4000K 3500K	W White	/D10 /480/D10	010V dimming, 120-277V 010V dimming, 480V†

*Only available for 8 ft (70W and 100W) models.

**Not available for any 2 ft models or 480V models

§ Only available for /D10 models.