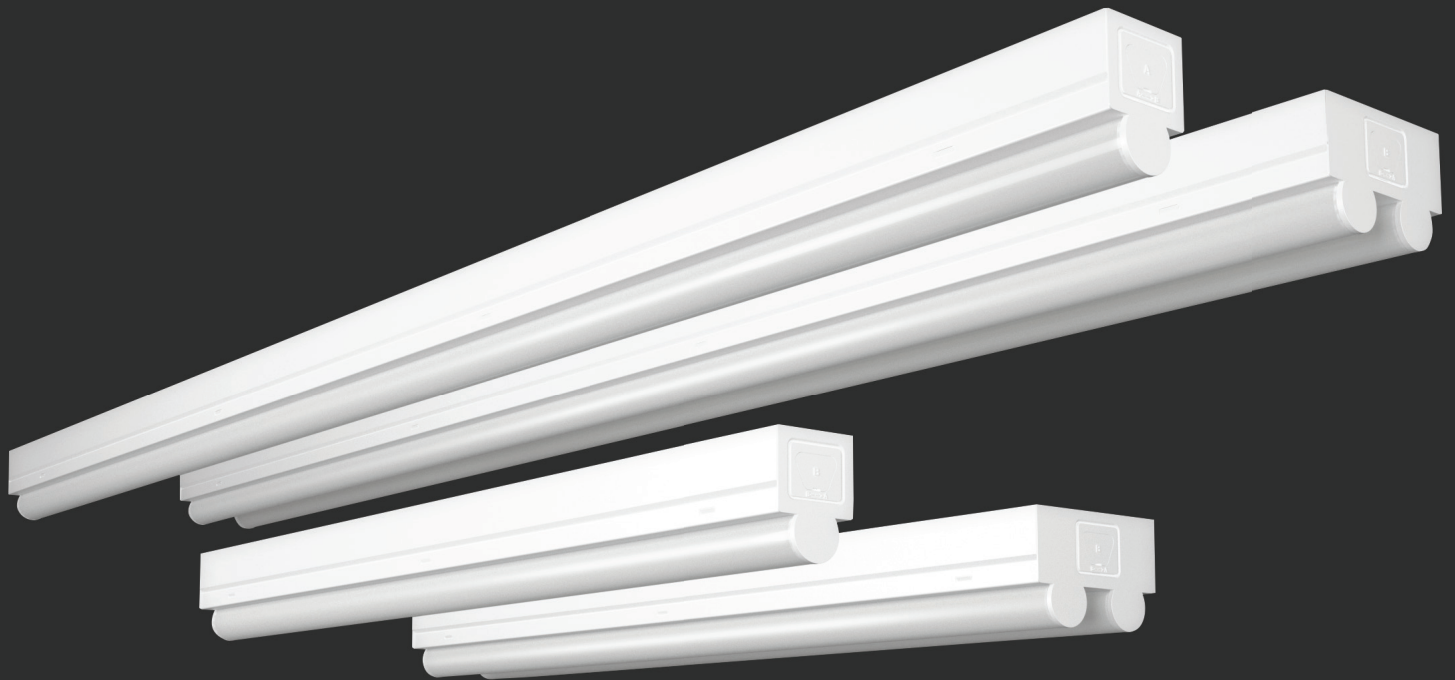


No fluorescent flicker. No lamp replacement.

LED strip lights that work smart, not hard.



STRIP-LED

RAB | Indoor
RABLIGHTING.COM • 888 722-1000

STRP-LED



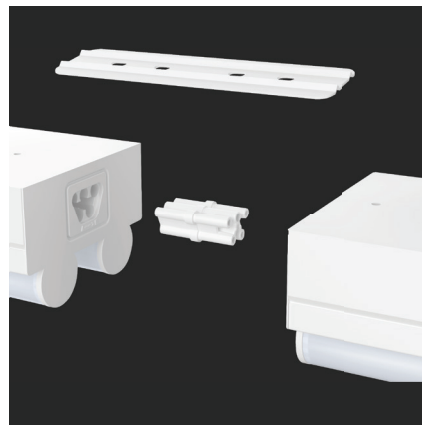
RAB's warranty is subject to all terms and conditions found at rablighting.com/warranty.



- Traditional, fluorescent tube look; energy-saving LED technology
- Offered in 4 models: 2 ft (10W or 20W) and 4 ft (20W or 40W)
- Surface-mount ready; accessories available for junction box or suspended mount
- 0-10V dimming
- Bi-level motion sensor or battery backup available (only certain models)
- 50,000-Hour LED lifespan



STRP-LED is available in both 2 ft (10W or 20W) and 4 ft (20W or 40W) models, and in three color temperatures.



Continuous-run mounting is a breeze with the quick-connect adapter (included). Just wire the first fixture in the run, and connect the rest! The joiner bracket accessory keeps the connection secure.



Release buttons on either side of the STRP-LED gain you quick, tool-less wiring access, and once you're done they easily snap shut again.



A bi-level microwave motion sensor is available for only certain models, which lowers the STRP-LED's output to 50% when the area is unoccupied, boosting energy savings even more.



STRP-LED is designed for surface mounting, but accessories are available for junction box (cover plate) or suspended mounting (S-hooks + 9" chains).

Specifications

UL Listing:

Suitable for damp locations

LEDs:

Long-life, high-efficacy, micro-power, surface-mount LEDs

Lifespan:

50,000-hour LED lifespan based on IES LM-80 results and TM-21 calculations

Driver:

10W (2ft): Class 2, Constant Current, 120-277V, 50-60Hz, 120V:0.09A, 208V: 0.05A, 240V: 0.05A, 277V: 0.04A

20W (2ft): Class 2, Constant Current, 120-277V, 50-60Hz, 120V:0.17A, 208V: 0.10A, 240V: 0.09A, 277V: 0.08A

20W (4ft): Class 2, Constant Current, 120-277V, 50-60Hz, 120V:0.17A, 208V: 0.10A, 240V: 0.09A, 277V: 0.08A

40W (4ft): Class 2, Constant Current, 120-277V, 50-60Hz, 120V:0.34A, 208V: 0.20A, 240V: 0.17A, 277V: 0.15A

Dimming Driver:

Driver includes dimming control wiring for 0-10V dimming systems. Requires separate 0-10V DC dimming circuit. Dims as low as 10%.

Housing:

Sheet metal stamping 24 gauge, cold-rolled steel

Mounting:

Comes standard with surface mounting hardware. Accessories available for suspension hook mounting or J-Box mounting (*purchased separately*).

Connecting Adaptor:

Link several fixtures using connecting adaptor, included with each fixture. Separate connecting plate (order as accessory) recommended for each connection point.

Maximum connections allowed: Single Tube/2 ft - 30, Single Tube/4 ft - 25, Double Tube/2 ft - 25, Double Tub/4 ft - 15.

Finish:

Formulated for high durability and long-lasting color

Cold Weather Starting:

The minimum starting temperature is -20°C (-4°F). Elevated ambient temperature may effect driver life.

Maximum Ambient Temperature:

Suitable for use in 50°C (122°F)

Color Stability:

LED color temperature is warranted to shift no more than 200K in CCT over a 5-year period

Green Technology:

Mercury and UV free. RoHS-compliant components.

Color Uniformity:

RAB's range of CCT (Correlated Color Temperature) follows the guidelines of the American National Standard for Specifications for the Chromaticity of Solid State Lighting (SSL) Products, ANSI C78.377-2017.

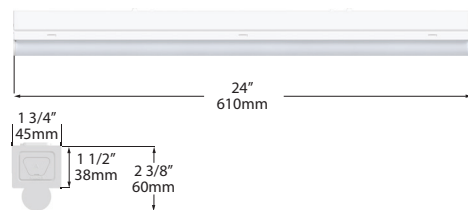
IESNA LM-79 & IESNA LM-80 Testing:

RAB LED luminaires have been tested by an independent laboratory in accordance with IESNA LM-79 and LM-80

Dimensions and Weights

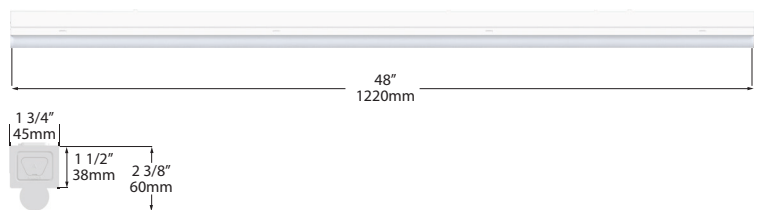
STRP-LED SINGLE TUBE 2ft

Weight: 1.9 lbs



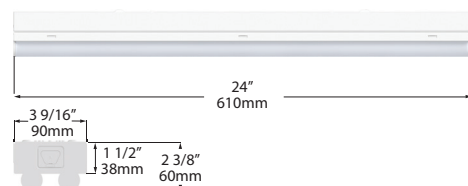
STRP-LED SINGLE TUBE 4ft

Weight: 3.3 lbs



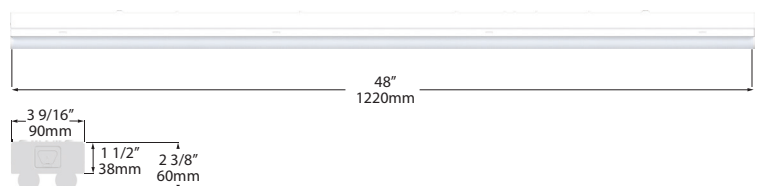
STRP-LED DOUBLE TUBE 2ft

Weight: 2.7 lbs



STRP-LED DOUBLE TUBE 4ft

Weight: 5.4 lbs



Performance

10W Single Tube (2ft)	5000K	4000K	3500K
Input Watts	10	9.9	9.9
Lumens	1,417	1,449	1,332
Efficacy (Lm/W)	141.7	146.4	134.2
Color Accuracy (CRI)	85	83	86

Replaces Up To (1) 17W T8 or (1) 20W T12

Energy savings **50%**

20W Double Tube (2ft)	5000K	4000K	3500K
Input Watts	18.7	18.6	18.6
Lumens	2,662	2,772	2,503
Efficacy (Lm/W)	142.6	142.7	134.3
Color Accuracy (CRI)	85	83	86

Replaces Up To (2) 17W T8 or (2) 20W T12

Energy savings **50%**

20W Single Tube (4ft)	5000K	4000K	3500K
Input Watts	18.3	18.4	18.8
Lumens	2,894	2,835	2,681
Efficacy (Lm/W)	158.1	154.1	142.8
Color Accuracy (CRI)	84	84	85

Replaces Up To (1) 32W T8 or (1) 40W T12

Energy savings **50%**

40W Double Tube (4ft)	5000K	4000K	3500K
Input Watts	39	39	39.2
Lumens	5,785	5,539	5,359
Efficacy (Lm/W)	148.2	147.6	136.7
Color Accuracy (CRI)	84	84	86

Replaces Up To (2) 32W T8 or (2) 40W T12

Energy savings **50%**

Ordering Information

Product Family	Length/Wattage	CRI/CCT	Voltage	Other Options
STRP			U	
210	Single tube 2ft 10W	850	U	Blank No Option
220	Double tube 2ft 20W	840	Universal 120-227V	/MVS Microwave Bi-Level Motion Sensor*
420	Single tube 4ft 20W	835		/E2 Emergency Backup*
440	Double tube 2ft 40W			

*Only available with the STRP440