

WPX Premium Wall Packs



WPX1

WPX2



WPX3



PROJECT:

DATE:

TYPE:

PREPARED BY:



KEY FEATURES

- Premium wall pack available in three different sizes and selectable wattages:
WPX1: 30/20/15W
WPX2: 80/60/40W
WPX3: 130/100/65W
- CCT Adjustable: **3000/4000/5000K**
- Selectable **on/off** photocell
- **120-277V & 480V**
- **0-10V** dimming standard
- **Battery backup** available for 120-277V models
- Available with **smart controls**. Multi-sensor remote sold separately

IP65

IP RATING



FIELD
ADJUSTABLE



0-10V



100,000
HRS



WET
RATED



LIGHTCLOUD

Lightcloud

LIGHTCLOUD
BLUE

PERFORMANCE

WPX1 (30/20/15W)	3000K	4000K	5000K	3000K	4000K	5000K	3000K	4000K	5000K
Wattage	30W			20W			15W		
Input Watts	33.2W	32.4W	33.3W	26.5W	26W	26.6W	17.9W	17.7W	17.9W
Lumens	4,470	4,739	4,619	3,648	3,818	3,764	2,497	2,575	2,562
Efficacy	134.6	146.3	138.7	137.7	146.8	141.5	1389.5	145.5	143.1
CRI	82	84	82	82	84	82	82	84	83
Voltage Ratings	120-277V								

WPX2 (80/60/40W)	3000K	4000K	5000K	3000K	4000K	5000K	3000K	4000K	5000K
Wattage	80W			60W			40W		
Input Watts	79W	76.6W	79.3W	57.5W	56W	57.8W	40W	39.3W	40.1W
Lumens	10,592	11,353	11,042	8,052	8,463	8,386	5,789	5,996	5,982
Efficacy	134.1	148.2	139.2	140	151.1	145.1	144.7	152.6	149.2
CRI	82	84	83	82	84	83	83	84	83
Voltage Ratings	120-277V								

PERFORMANCE

WPX2 (80/60/40W)	3000K	4000K	5000K	3000K	4000K	5000K	3000K	4000K	5000K
Wattage	80W			60W			40W		
Input Watts	79.8W	77.2W	80.1W	59.2W	57.6W	59.4W	42.5W	41.6W	42.6W
Lumens	10,744	11,465	11,183	8,248	8,639	8,553	6,033	6,238	6,227
Efficacy	134.6	148.5	139.6	139.3	150	144	142	150	146.2
CRI	82	84	83	82	84	83	83	84	83
Voltage Ratings	480V								

WPX3 (130/100/65W)	3000K	4000K	5000K	3000K	4000K	5000K	3000K	4000K	5000K
Wattage	130W			100W			65W		
Input Watts	131.2W	126.1W	19.6W	100.2W	97W	99.2W	65.8W	64.2W	65.2W
Lumens	17,057	18,635	18,047	13,753	14,761	14,468	9,509	10,042	10,026
Efficacy	130	147.8	139.3	137.3	152.2	145.8	144.5	156.4	153.8
CRI	83	86	85	83	86	85	8/3	86	85
Voltage Ratings	120-277V								

WPX3 (130/100/65W)	3000K	4000K	5000K	3000K	4000K	5000K	3000K	4000K	5000K
Wattage	130W			100W			65W		
Input Watts	130.7W	125.6W	129.2W	102.8W	99.4W	101.7W	69.5W	68W	69W
Lumens	17,215	18,809	18,234	14,082	15,111	14,816	9,946	10,415	10,384
Efficacy	131.7	149.8	141.1	137	152	145.7	143.1	153.2	150.5
CRI	82	86	85	83	86	85	83	86	85
Voltage Ratings	480V								

TECHNICAL SPECIFICATIONS

COMPLIANCE

UL Listed

Suitable for wet location

DLC Listed

This product is listed by Design Lights Consortium (DLC) as an ultra-efficient premium product that qualifies for the highest tier of rebates from DLC Member Utilities. Designed to meet DLC 5.1 requirements.

MODEL#	DLC ID
WPX1	S-MW1VZF
WPX2	S-QGK4HV
WPX3	S-10CCLB
WPX2/480	S-CK3MPC
WPX3/480	S-NQRGMQ

LED CHARACTERISTICS

LEDs

Long-life, high-efficacy, surface-mount LEDs

FIELD ADJUSTABLE

Adjustable CCT: 3000K/4000K/5000K (factory default 4000K)

Selectable Wattage:

WPX1: 30W/20W/15W (factory default 30W)

WPX2: 80W/60W/40W (factory default 80W)

WPX3: 130W/100W/65W (factory default 130W)

TECHNICAL SPECIFICATIONS

CONSTRUCTION

IP Rating

Ingress protection rating of IP65 for dust and water

Cold Weather Starting

Minimum starting temperature is -40°C (-40°F)

Maximum Ambient Temperature

Suitable for use in up to 40°C (104°F)

Cold Weather Starting Temperature for Battery Backup

Minimum starting temperature is 1°C (33.8°F)

Maximum Ambient Temperature for Battery Backup

Suitable for use in up to 60°C (140°F)

Housing

Precision die-cast aluminum housing and door frame

Mounting

Hinged wiring access and conduit entries on the back sides, top and bottom make installation a snap

Lens

Borosilicate glass

Gasket

High-temperature silicone gasket

Reflector

Aluminum

Green Technology

Mercury and UV free. RoHS-compliant components.

Finish

Formulated for high durability and long lasting color

ELECTRICAL

Drivers:

Constant Current, Class 2, 120-277V, 50/60 Hz

WPX1-30W: 0.28A at 120V, 0.14A at 208V, 0.13A at 240V, 0.12A at 277V

WPX1-20W: 0.22A at 120V, 0.10A at 208V, 0.8A at 240V, 0.7A at 277V

WPX1-15W: 0.14A at 120V, 0.7A at 208V, 0.6A at 240V, 0.5A at 277V

WPX2-80W: 0.66A at 120V, 0.39A at 208V, 0.33A at 240V, 0.30A at 277V

WPX2-60W: 0.48A at 120V, 0.29A at 208V, 0.25A at 240V, 0.23A at 277V

WPX2-40W: 0.34A at 120V, 0.19A at 208V, 0.17A at 240V, 0.16A at 277V

Constant Current, Class 1, 120-277V, 50/60 Hz

WPX3-130W: 1.10A at 120V, 0.63A at 208V, 0.55A at 240V, 0.48A at 277V

WPX3-100W: 0.84A at 120V, 0.48A at 208V, 0.42A at 240V, 0.37A at 277V

WPX3-65W: 0.55A at 120V, 0.32A at 208V, 0.27A at 240V, 0.26A at 277V

Constant Current, Class 2, 480V, 50/60 Hz

WPX2-80W: 0.18A at 480V

WPX2-60W: 0.14A at 480V

WPX2-40W: 0.11A at 480V

Constant Current, Class 1, 480V, 50/60 Hz

WPX3-130W: 0.30A at 480V

WPX3-100W: 0.25A at 480V

WPX3-65W: 0.18A at 480V

ELECTRICAL (CONTINUED)

Dimming Driver:

Driver includes dimming control wiring for 0-10V dimming systems. Requires separate 0-10V DC dimming circuit. Dims down to 10%.

THD

WPX1-30W: 2.8% at 120V, 20.6% at 277V

WPX1-20W: 3.2 at 120V, 11.9% at 277V

WPX1-15W: 5.1% at 120V, 9.3% at 277V

WPX2-80W: 2.5% at 120V, 3% at 277V

WPX2-60W: 2% at 120V, 12% at 277V

WPX2-40W: 2% at 120V, 3.7% at 277V

WPX2-80W: 7.2% at 480V

WPX2-60W: 10.6% at 480V

WPX2-40W: 16.1% at 480V

WPX3-130W: 4.1% at 120V, 7.2% at 277V

WPX3-100W: 4.4% at 120V, 8.9% at 277V

WPX3-65W: 5.1% at 120V, 12.2% at 277V

WPX3-130W: 13.3% at 480V

WPX3-100W: 14.6% at 480V

WPX3-65W: 17.9% at 480V

Power Factor

WPX1-30W: 99.7% at 120V, 93.5% at 277V

WPX1-20W: 99.6 at 120V, 90.2% at 277V

WPX1-15W: 98.9% at 120V, 81.6% at 277V

WPX2-80W: 99.7% at 120V, 95% at 277V

WPX2-60W: 99.6% at 120V, 91% at 277V

WPX2-40W: 99.2% at 120V, 84.8% at 277V

WPX2-80W: 91.3% at 480V

WPX2-60W: 85.8% at 480V

WPX2-40W: 78.2% at 480V

WPX3-130W: 99.8% at 120V, 95.9% at 277V

WPX3-100W: 99.7% at 120V, 93.7% at 277V

WPX3-65W: 99.3% at 120V, 87% at 277V

WPX3-130W: 90% at 480V

WPX3-100W: 87% at 480V

WPX3-65W: 79.9% at 480V

Photocell

Selectable On/Off Photocell included

Emergency Light Loss Factor

WPX2: 0.08

WPX3: 0.073

Surge Protection

WPX1/WPX2: 4/4kV

WPX3: 6/6kV

TECHNICAL SPECIFICATIONS

OCCUPANCY SENSORS

Sensor Type: Microwave (MVS)

Max Mounting Height: 8 ft. to 15 ft.

Detection Range: 10 ft. to 23 ft.

Default Settings:

Motion Sensitivity: High

Brightness when triggered : 100%

Hold time: 1 minute (20 minutes for LCB sensors)

Standby to dim: 20%

Standby time: 1 minute

When vacant: Off

Adjustable Settings: Settings for Lightcloud Blue-enabled sensors can be adjusted using the mobile app. All other sensors will require MSR1 Remote to adjust the following sensor settings:

Standby to dim: 10%/20%/30%/50%

Standby time: 0s/10s/30s/1min/5min/10min/30min/60min/+∞

Daylight Threshold: 2Lux/10Lux/30Lux/50Lux/80Lux/120Lux/Disable

OTHER

Warranty

The RAB 10-year, no-compromise warranty covers light output, color stability, driver performance, paint finish and labor. RAB's warranty is subject to all terms and conditions found at rablighting.com/warranty.

Buy American Act Compliance:

RAB values USA manufacturing! Upon request, RAB may be able to manufacture this product to be compliant with the BUY American Act (BAA). Please contact customer service to request a quote for the product to be made BAA compliant.

Lifespan

100,000-hour LED lifespan based on IES LM-80 results and TM-21 calculations

WIRELESS NETWORK LIGHTING CONTROLS

Lightcloud products offer integrated network lighting control for a truly wireless solution that allows you to manage RAB's various compatible devices. With RAB's patented Rapid Provisioning technology, devices can be quickly and easily commissioned for residential and commercial applications. Each device can communicate with other devices in the mesh network. With two Lightcloud systems to choose from, it's easy to implement controls anywhere.

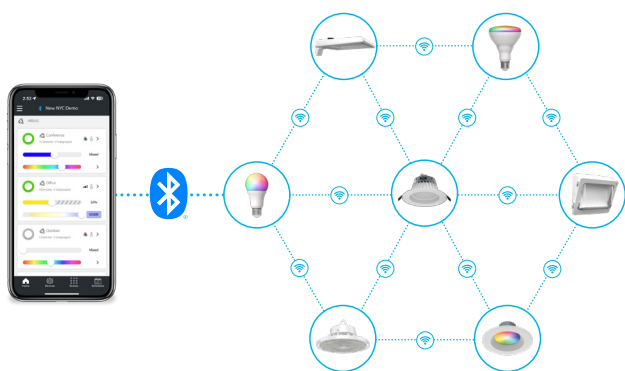


Learn more about Lightcloud wireless networked lighting controls.

Design Lights Consortium Network Lighting Controls:

- Interior Applications: N1XMLOEATB
- Exterior Applications: NHCZ2BIA17L

Lightcloud®



- Utilizes Bluetooth Mesh, eliminating the need for a Gateway or Hub
- Ideal for applications that need basic wireless control such as ON/OFF, dimming, color tuning, Schedules, and SmartShift
- Download the Lightcloud Blue mobile app for iOS or Android devices
- Add the XDIM/BRIDGE/LCB and LCGATEWAY to adopt premium Lightcloud Enterprise features

SIMPLE SETUP



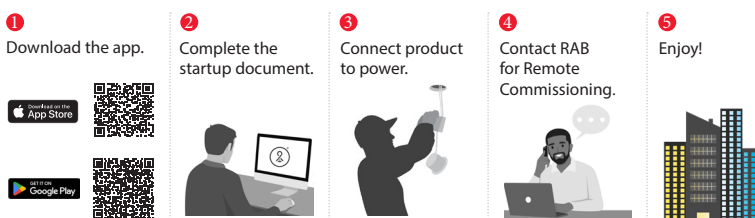
Learn more about [Lightcloud Blue](#). Visit the [Lightcloud Blue Resources](#) page for more information on how to use the system.

Lightcloud®



- Utilizes a secure cellular and Zigbee mesh network that requires a Gateway or Hub (sold separately)
- Offers premium features like remote commissioning, demand response, BACnet integration, and more
- Download the Lightcloud Enterprise mobile app for iOS or Android devices

SIMPLE SETUP



Learn more about [Lightcloud Enterprise](#). Visit the [Lightcloud Enterprise Resources](#) page for more information on how to use the system.

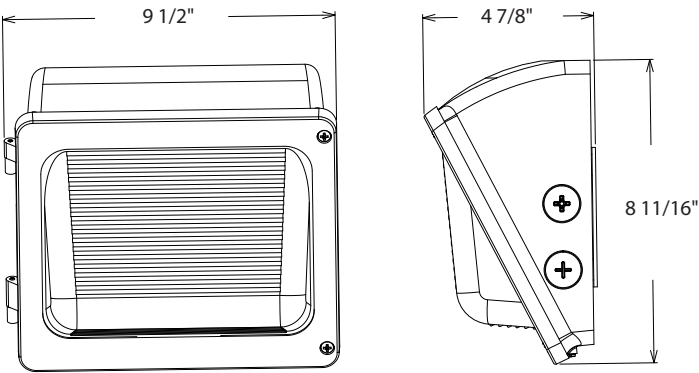
WPX Premium Wall Packs



DIMENSIONS

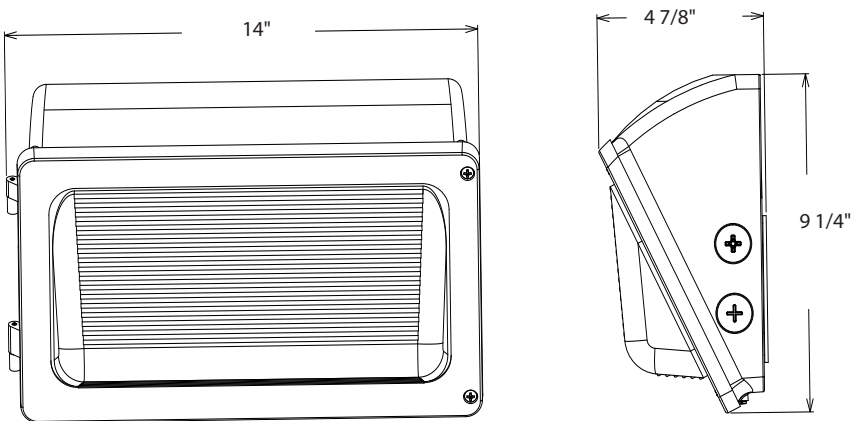
WPX1

Weight: 6.2 lbs



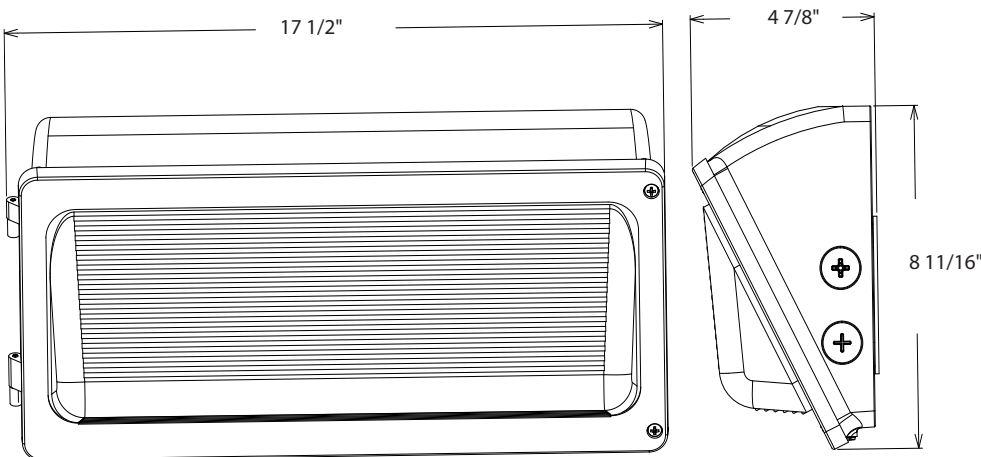
WPX2

Weight: 9.5 lbs



WPX3

Weight: 11.8 lbs



WPX Premium Wall Packs



PERFORMANCE (CONTINUED)

ORDERING MATRIX

WPX

Family	Wattage	Color Temp	Finish	Driver	Controls	Battery Backup
WPX						
1	30/20/15W	BLANK 3000/4000/5000K	BLANK Bronze	BLANK 120-277V,	BLANK Selectable	BLANK None
2	80/60/40W	CCT Adjustable	W White	0-10V Dimming	On/Off Photocell	Battery Backup
3	130/100/65W			/480 ¹ 480V, 0-10V Dimming	/MVS Microwave Sensor /LCB Lightcloud Blue /LCBS/MVS Lightcloud Blue w/MVS Sensor /LC Lightcloud	

¹ 480V available only in WPX2 and WPX3 models
² Battery backup available only for WPX2 and WPX3 in 120-277V models